

Table of Contents

efio!121i BOM.....	1
efio!121i 12.1" LCD SOP.....	8
efio!121i Additional Operations Instruction Manual.....	20
efio!121i System Setup Instruction Manual.....	33
efio!121i (Complete set) Instruction Manual.....	53
efio!121i Disassembly.....	62

efio!121i Notebook BOM
(internal code name: E12B)

Level	P/N	Description	Unit	
		#8019 BASE MODULE-W/GENERIC BIOS	PCE	1
....5	82-814700-00	E12B-PCB ASS'Y-GM-PM-REV:0-W/BIO	PCE	1
....4	80-878000-00D	E12T-PCB ASS'Y-KN-DC-IN-REV:D-W/	PCE	1
....4	80-878100-00A	E12T-PCB ASS'Y-KN-USB-REV:A-W/ME	PCE	1
....4	86-643000-00	#8019/#8131 SYSTEM CABINET-E12B	PCE	1
....5	22-600043-10	PIFA ANTENNA-W/HARNESS-FOR GEMTE	PCE	1
....5	29-001734-00	E12T-MDC MODEN HARNESS-SH7340	PCE	1
....5	29-001735-00	E12T-POWER HARNESS-SH735	PCE	1
....5	29-015340-00	P22AJ-SB-USB FPC-CA340A	PCE	1
....5	40-003553-01	E12B-HEATSINK MODULE-W/FAN-W/THE	PCE	1
....5	40-008163-00	E12T-AL FOIL FOR K/B BRACKET EMI	PCE	1
....5	40-008180-00	E12B-UPPER AL FOIL-E4838A	PCE	1
....5	40-011662-00	E12T-RAM DOOR-#8019-C3778A	PCE	1
....5	41-721520-03	SCREW ISOT-M2X3L-SELF-LOCKING jí	PCE	9
....5	41-721526-05	SCREW ISOT-M2.6X5L H=0.8mm-NYLOK	PCE	2
....5	41-850520-06	SCREW ISOP-M2X6L-SELF-LOCKING-B3	PCE	14
....5	50-035190-00	E12T-HINGE COVER-L-#8019-E46790	PCE	1
....5	50-035191-00	E12T-HINGE COVER-R-#8019-E46800	PCE	1
....5	50-035192-00	E12T-HARNESS COVER-#8019-E46810	PCE	1
....5	50-964101-01	E12T-CPU DOOR ASS'Y-#8019-E1097-	PCE	1
....5	50-964301-01	E12B-UPPER COVER ASS'Y-#8019/#81	PCE	1
....5	51-035041-00	ELECTRICALLY CONDUCTIVE-FABRIC T	PCE	1
....5	51-036212-00	E12T-SPONGE FOR POWER BUTTON-E48	PCE	1
....5	51-350094-01	CONDUCTIVE SPONGE 5X2X1000mm-KL1	PCE	0.12

efio!121i Notebook BOM
(internal code name: E12B)

Level	P/N	Description	Unit
.....5	51-350094-02	CONDUCTIVE SPONGE 5X3.5X1000mm-K	PCE 0.015
.....5	51-350094-03	CONDUCTIVE SPONGE 5X5.5X1000mm-K	PCE 0.035
.....5	51-350094-05	CONDUCTIVE SPONGE 9X3.5X1000mm-K	PCE 0.02
.....5	51-350094-06	CONDUCTIVE SPONGE 10X1X1000mm-KL	PCE 0.03
.....5	51-350094-15	P88S-CONDUCTIVE SPONGE 10X0.5X10	PCE 0.035
.....5	51-350094-21	CONDUCTIVE SPONGE-7X1X1000mm-KL1	PCE 0.045
.....5	51-350094-23	E12T-CONDUCTIVE SPONGE-3X4X1000m	PCE 0.025
.....5	52-000000-20	P22AJ-RUBBER FOOT-PANTONE 428C-D	PCE 2
.....5	52-002022-20	P22AJ-LOWER CD-ROM RUBBER-PANTON	PCE 1
.....5	52-002121-00	E12T-RUBBER FOR HDD-E4803A	PCE 1
.....5	63-250190-00	KEY PARTS BARCODE LABEL-KL18260	PCE 1
.....5	76-060007-00	MDC MODEM CARD-SMART LINK-MDC56	PCE 1
.....5	77-643007-00	E12B-#8019 M LOWER COVER KIT	PCE 1
.....6	40-002470-00	E12B-LOWER COVER-#8019-B1328	PCE 1
.....6	40-006040-00	N222S1-BATTERY HOOK-B3377A	PCE 1
.....6	40-011951-00	N222S1-BATTERY LATCH SPRING-D479	PCE 1
.....6	41-420520-03	SCREW BPS/W (j5.5)-M2X3L-NYLOK-	PCE 2
.....6	50-023107-10	E12T-DC INDICATOR-PANTONE 428C-D	PCE 1
.....6	50-043080-01	E12T-BATTERY LATCH-#8019-E4705A	PCE 1
.....6	51-036041-10	E12T-HDD SPONGE FOR LOWER UP SID	PCE 1
.....6	51-036042-10	E12T-HDD SPONGE FOR LOWER DOWN S	PCE 1
.....6	51-350094-02	CONDUCTIVE SPONGE 5X3.5X1000mm-K	PCE 0.025
.....6	51-350094-06	CONDUCTIVE SPONGE 10X1X1000mm-KL	PCE 0.025
.....6	51-350094-15	P88S-CONDUCTIVE SPONGE 10X0.5X10	PCE 0.03
.....6	52-000000-20	P22AJ-RUBBER FOOT-PANTONE 428C-D	PCE 2
.....5	77-643009-00	E12B-#8019/#8131 PALM REST KIT	PCE 1
.....6	22-300000-00	SPEAKER (R)(L)-W/RUBBER-C3781	PCE 1

efio!121i Notebook BOM
(internal code name: E12B)

Level	P/N	Description	Unit
.....6	29-016338-00	P22AJ-FFC (P=1.0) FOR TOUCHPAD-C	PCE 1
.....6	40-008051-00	P14N-UPPER EMI AL FOIL-E41290	PCE 1
.....6	40-008181-00	E12B-AL FOIL FOR PALMREST-IN SPE	PCE 1
.....6	40-030884-00	E12T-BRACKET FOR PALMREST SPEAKE	PCE 2
.....6	40-030885-01	E12T-TOUCHPAD BRACKET-C3776A	PCE 1
.....6	41-760020-02	SCREW ISOTT-M2.0X2L ID3.4/H0.4m	PCE 2
.....6	50-964301-11	E12B-PALM REST ASS'Y-#8019/#8131	PCE 1
.....6	51-005060-00	E12T-SPEAKER MESH-BLACK-E46930	PCE 2
.....6	51-350094-02	CONDUCTIVE SPONGE 5X3.5X1000mm-K	PCE 0.015
.....6	73-080052-20	TOUCH PAD-SOTEC P-03012-SYNAPTIC	PCE 1
BAT			
...3	23-050180-10	BAT-LIION-3S2P-2200mAh-#8019-PS-	PCE 1
CPU			
...3	52-003091-00	P22T-RUBBER FOR WIRELESS-E45500	PCE 1
...3	76-070021-10	WLAN MODULE MINIPCI-3.3V-TYPE 3B	PCE 1
...3	01-007590-G0	CPU-PENTIUM M CELERON-1.3GHZ-uFC	PCE 1
...3	01-0076E1-G0	CPU-BANIAS PGA-1.4GHZ/600MHZ-UFC	PCE 1
...3	01-0076J4-G0	CPU-BANIAS PGA-1.7GHZ/600MHZ-uFC	PCE 1
...3	01-0076J2-G0	CPU-BANIAS PGA-1.5GHZ/600MHZ-uFC	PCE 1
...3	01-0076J3-G0	CPU-BANIAS PGA-1.6GHZ/600MHZ-uFC	PCE 1
HDD			
...3	77-606008-20	N22S1-HDD KIT	PCE 1
....4	40-008140-00	D212A-AL FOIL FOR HDD BRACKET-E4	PCE 2
....4	40-030691-01	N22S1-HDD BRACKET-C3421B	PCE 1
....4	41-870130-04	SCREW ISOF-M3X4L-B3519L	PCE 4
...3	70-922400-50	HDD-40GB-2.5"-9.5X100X70mm-MHT20	PCE 1

efio!121i Notebook BOM
(internal code name: E12B)

Level	P/N	Description	Unit	
...3	70-822300-60	HDD-30GB-2.5"-9.5X100X70mm-MHT20	PCE	1
...3	70-A22600-10	HDD-60GB-4200RPM-2.5" 9.5X100X70	PCE	1
KB				
	US K/B		PCE	1
...3	71-926101-00	K/B-83 KEY-EN-PANTONE 285C-W/NEW	PCE	1
	UK K/B		PCE	1
...3	71-926108-00	K/B-83 KEY-XZ-285C-E12T-W/NEW MI	PCE	1
	FR K/B		PCE	1
...3	71-926105-00	K/B-83 KEY-FR-285C-E12T-W/NEW MI	PCE	1
	TW K/B		PCE	1
...3	71-926102-00	K/B-83 KEY-ZH-285C-E12T-W/NEW MI	PCE	1
	CF K/B		PCE	1
...3	71-926129-00	K/B-83 KEY-XD-285C-E12T-W/NEW MI	PCE	1
	GR K/B		PCE	1
...3	71-926107-00	K/B-83 KEY-DE-285C-E12T-W/NEW MI	PCE	1
	RU KB		PCE	1
...3	71-926124-00	K/B-83 KEY-RU-285C-E12T-W/NEW MI	PCE	1
LCD				
...3	22-600040-01	PIFA ANTENNA-R-C3774-E12T	PCE	1
...3	22-600041-01	PIFA ANTENNA-L-C3812A-E12T	PCE	1
...3	29-001650-03	N222S1-HARNESS FOR HYUNDAI 12.1"	PCE	1
...3	40-008160-00	E12T-AL FOIL FOR LCD-B23720	PCE	1
...3	40-011701-00	N222S8-LCD HOOK SPRING-D49610	PCE	1
...3	40-015090-00	E12T-HINGE R-C37850	PCE	1
...3	40-015091-00	E12T-HINGE L-C37840	PCE	1
...3	40-030881-01	E12T-LCD BRACKET R-C3772	PCE	1

efio!121i Notebook BOM
(internal code name: E12B)

Level	P/N	Description	Unit
...3	40-030882-01	E12T-LCD BRACKET-L-C3773A	PCE 1
...3	41-420520-03	SCREW BPS/W (j5.5)-M2X3L-NYLOK-	PCE 2
...3	41-720520-04	SCREW M2.0*4 NI+NYLOK I (KH)-B35	PCE 2
...3	41-720526-04	SCREW ISOT-M2.6X4L H=0.8mm-NYLOK	PCE 4
...3	41-721520-03	SCREW ISOT-M2X3L-SELF-LOCKING j	PCE 6
...3	41-721526-05	SCREW ISOT-M2.6X5L H=0.8mm-NYLOK	PCE 2
...3	50-000310-01	E12T-LCD HOOK-E4678A	PCE 1
...3	50-000315-01	E12T-HARNESS PLATE FOR LCD-E4773	PCE 1
...3	50-020385-F0	P22AJ-RUBBER PAD-PANTONE 428C-B4	PCE 2
...3	50-022330-00	E12B-LCD BEZEL FOR TH-#8019-B132	PCE 1
...3	50-023324-00	N22S8P-MYLAR FOR LCD HARNESS-E4	PCE 1
...3	50-023472-00	E12B-MYLAR FOR LCD-15X1.5X0.5mm-	PCE 2
...3	50-033110-00	E12B-LCD COVER FOR TH-#8019-B132	PCE 1
...3	51-036215-00	E12T-SUPPORT SPONGE FOR LCD-E483	PCE 1
...3	52-002083-00	P22AJ-RUBBER (TOP)-PANTONE 428C-	PCE 4
...3	72-112230-30	LCD-12.1" XGA TFT-HYUNDAI-HT12X1	PCE 1
...3	76-030105-00	INVERTER-5V-5W-10X123mm-FOR 12.1	PCE 1
MEM			
	256MB DDR RAM-HYNIX-E1		PCE 1
...3	18-060005-E0	SDRAM DDR SO-DIMM-HYMD232M646C(L	PCE 1
	512MB DDR RAM-HYNIX-E1		PCE 1
...3	18-060006-30	DDR SO-DIMM-HYMD564M646A(L)6-J-5	PCE 1
Keyparts			
...3	50-000203-20	P22AJ-LCD PROTECTIVE PLATE-W/O C	PCE 1
...3	50-023474-00	E12B-LCD COVER PROTECT SHEET-MYL	PCE 1
...3	63-001083-00	P22AJ-CLEAR LABEL-E4648	PCE 2

efio!121i Notebook BOM
(internal code name: E12B)

Level	P/N	Description	Unit
ODD			
...3	70-140460-10	NERO-OEM SUITE 1-6.0.0.24B-ALL M	PCE 1
...3	70-150202-00	DRIVER CD-VER:4.0-FOR POWER DVD	PCE 1
....4	40-030692-01	N222S1-CD-ROM BRACKET-D4543B	PCE 1
....4	41-650217-03	SCREW-BTB-1.7X3L-BLACK-B3518C	PCE 1
....4	41-721520-03	SCREW ISOT-M2X3L-SELF-LOCKING jí	PCE 5
	#8019 QSI DVD-ROM ASS'Y-E12B		PCE 1
...3	70-200030-00	DVD-ROM-8X-SDR-083-QUANTA	PCE 1
....4	50-964101-70	E12T-#8019 QUANTA DVD BEZEL ASS'	PCE 1
	#8019 QSI COMBO SBW-242B ASS'Y-E		PCE 1
...3	70-210020-00	COMBO(CD-ROM/CD-RW/DVD-ROM)-SBW	PCE 1
....4	50-964101-30	E12T-#8019 QUANTA COMBO BEZEL AS	PCE 1
	#8019 KME DVD-RW ASS'Y-W/POWER D		PCE 1
...3	70-250002-00	SUPER MULTI-(CD-RW/DVD-RW/DVD+RW	PCE 1
....4	50-964101-80	E12T-#8019 KME DVD-RW BEZEL ASS'	PCE 1
OPT			
..2	50-020355-00	N222S1-DUMMY CARD-C3707	PCE 1
Packing			
....4	60-010200-00	BIG PE BAG	PCE 0.017
....4	60-012001-00	PE BAG W/ARTWORK 360*380	PCE 1
....4	61-000845-00	PET OPC 1206 STRAC	PCE 1E-04
....4	61-002242-00	E12B-5 IN 1 LOWER EPE CUSHIONE-C	PCE 0.2
....4	61-002243-00	E12B-5 IN 1 UPPER EPE CUSHION-C3	PCE 0.2
....4	61-007230-00	E12B-5 IN 1 PAPER CUSHION FOR BA	PCE 0.2
....4	61-015060-00	N222S1-PROTECT PAPER FOR K/B-D48	PCE 1
....4	61-050113-00	OUTER CARTON-B3368F-5 IN 1-P79S	PCE 0.2

efio!121i Notebook BOM
(internal code name: E12B)

Level	P/N	Description	Unit
....4	63-001132-00	PACKING LABEL 100X150mm-C4219A	PCE 0.2
...3	29-130244-00	P93SE-MODEM CABLE-CA244	PCE 1
...3	60-010001-00	PE BAG 70X120mm	PCE 1
...3	60-010070-00	PLASTIC BAG-35cmX25cm-FOR CD/MAN	PCE 1
...3	62-030360-00	USER'S MANUAL-ZH/XT-R:00-E12B	PCE 1
...3	62-600038-02	WARRANTY CARD-ZH (TW)-FOR CTO	PCE 1
...3	63-000823-G0	E12B-LABEL FOR 2004 TAIWANESE MR	PCE 1
...3	70-140690-01	UTILITY CD-R1.01-FOR GENERIC-E12	PCE 1
...3	76-010562-30	ADAPTER-20V-60W-PLUG=90-FOR SOTE	PCE 1
...3	87-000643-10	2 IN 1 PACKING FOR T/H-W/CARRY B	PCE 1
...3	62-030361-00	USER'S MANUAL-EN/FR/DE/ES-R:00-E	PCE 1
...3	87-000643-00	3 IN 1 PACKING FOR T/H-W/ACCESSO	PCE 1
0.1	POWERCORD Japan(2-pin)	E12B-POWERCORD	PCE 1
..2	29-020151-10 US/TW/KR/CA/PH	P10-POWER CORD-JP 2P-BLACK-SP-12	PCE 1
..2	29-020181-10 GR/FR	N222S1-POWER CORD FOR US/PL/C-SP	PCE 1
..2	29-020183-11 RU	ALL MODEL-POWER CORD FOR GR/FR/H	PCE 1
..2	29-020183-12 KR	N222S1-POWER CORD FOR RU-H05VV-F	PCE 1
..2	29-020183-20 UK	ALL MODEL-POWER CORD FOR KR-SP-0	PCE 1
..2	29-020185-20 CHINA	9000,5000,2000,1000,N222S1-POWER	PCE 1
..2	29-020186-10	N222S1,N222S8-POWER CORD FOR CHI	PCE 1



Twinhead International Corp.

efio!121i 12.1" LCD SOP		DOCUMENT CODE:TESOP388	
		REVISION: 1	
		RELEASE DATE:	
		PAGES: 10	
DESCRIPTION	PREPARED BY	CONCURRED BY	APPROVED BY
1. UPDATE RELEASE		NA	



Twinhead International Corp.

(Document NO.): TESOP388

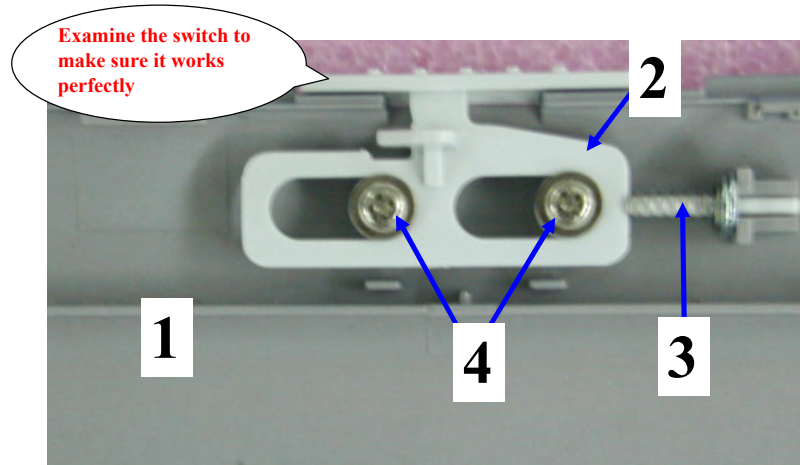
Page/version:

REV: 1

efio 121i 12.1" LCD S.O.P. Content		Page	Version	Page	Version	Page	Version	Page	Version
1. Instruction Manual	P.01	1	1						
2. Fabricated material setup instructions (Manpower: 9 people include testing)	P.02~P.09	2	1						
		3	1						
3. References:		4	1						
1. (Refer to D/C NO:KE3-0113)		5	1						
2. (Refer to D/C NO:KE3-0010)		6	1						
3. KE3-0058		7	1						
4. Tools: Screwdriver, Scotch tape		8	1						
		9	1						
		10	1						

Name of SOP: efio!121i LCD MODULE ASS'Y SOP	Working name: 6512-1	Revision: 1	Date: 2004.03.25	(Manufacturing Section):PE
--	----------------------	-------------	------------------	----------------------------

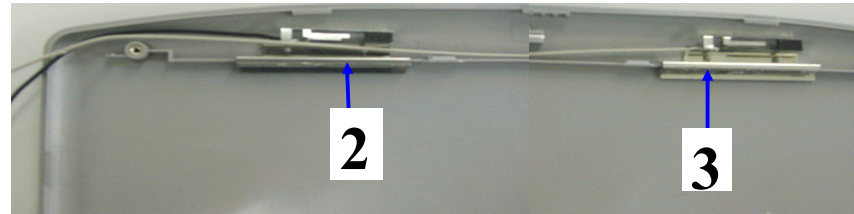
Explanation of illustrations



Difference	Operating item	Part name/specification	Part/number	Q'TY	Operation description	Important note	Jig/fixture
	1	E12B-LCD COVER FOR TH-#8019-B1326	50-033110-00	1	Check appearance to make sure there are no scratches.	N/A	N/A
		E12B-LCD COVER FOR TONG FANG-#8148	50-033110-10				
		E12B-LCD COVER-ID2-#8750	50-033120-00				
	2	E12T-LCD HOOK	50-000310-01	1	Assemble LCD spring on LCD HOOK and fit onto LCD cover	Note the direction of the spring when fitting hook	N/A
	3	N222S8-LCD HOOK SPRING	40-011701-00	1			
	4	SCREW BPS/W M2.0 X 3.0L-NYLOK	41-420520-03	2	Tighten LCD hook on LCD cover as shown in the diagram	Check to make sure the hook works properly	Electrical screwdriver/torque: 1.5±0.5Kgf-cm

Name of SOP: efio!121i LCD MODULE ASS'Y SOP	Working name: 6512-2	Revision: 1	Date: 2004.03.25	(Manufacturing Section): PE
--	----------------------	-------------	------------------	-----------------------------

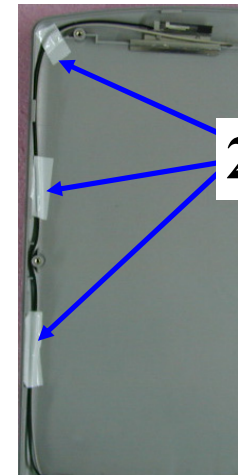
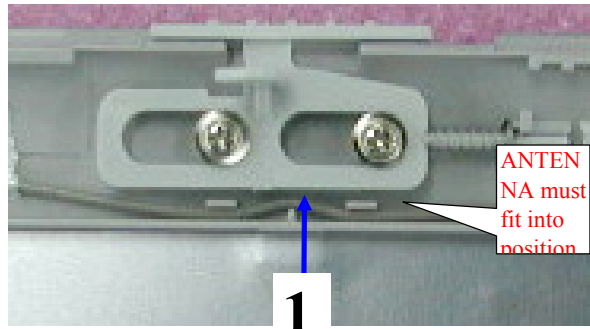
Explanation of illustrations



Difference	Operating item	Part name/specification	Part/number	Q'TY	Operation description	Important note	Jig/fixture
	1	E12T-AL FOIL FOR LCD	40-008160-00	1	Attach LCD aluminum foil to LCD cover	N/A	N/A
	2	PIFA ANTENN/A-L-C3812-E12T	22-600041-01	1	Assemble antenna into LCD COVER as shown in the diagram.	While assembling place the longer antenna to the left of the LCD COVER; place the shorter antenna to the right of the cover.	N/A
	3	PIFA ANTENN/A-R-C3774-E12T	22-600040-01	1			

Name of SOP: efio!121i LCD MODULE ASS'Y SOP	Working name: 6512-3	Revision: 1	Date: 2004.03.25	(Manufacturing Section): PE
--	----------------------	-------------	------------------	-----------------------------

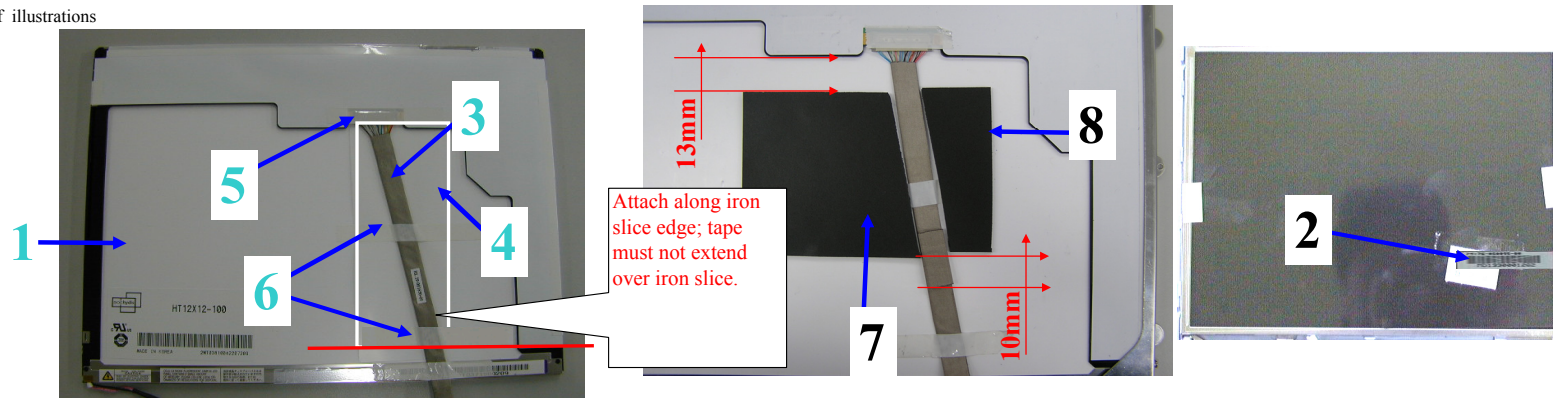
Explanation of illustrations



Difference	Operating item	Part name/specification	Part/number	Q'TY	Operation description	Important note	Jig/fixture
	1		N/A	N/A	ANTENNA must fit into position.	N/A	N/A
	2	Tape (3~4cm)	93-000256-10	3	Arrange antenna into LCD COVER left side and fix it with tapes as shown in the diagram.	N/A	N/A

Name of SOP: efio!121i LCD MODULE ASS'Y SOP	Working name: 6512-4	Revision: 1	Date: 2004.03.25	(Manufacturing Section): PE
--	----------------------	-------------	------------------	-----------------------------

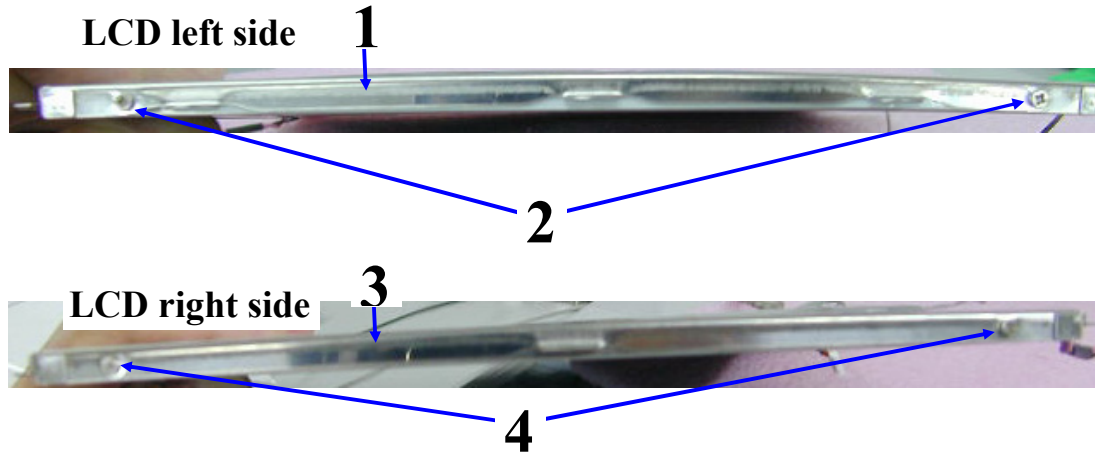
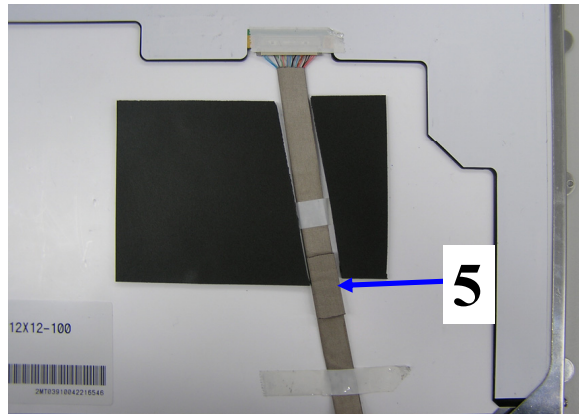
Explanation of illustrations



Difference	Operating item	Part name/specification	Part/number	Q'TY	Operation description	Important note	Jig/fixture
HYUNDAI LCD	1	LCD-12.1" XGA TFT-HYUNDAI-HT12X12	72-112230-30	1	Check LCD panel to make sure there are no scratches.	N/A	N/A
TOSHIBA LCD		LCD-12.1"-TFT XGA-TOSHIBA-LTD121EA41	72-11223G-10				
HYUNDAI LCD		LCD-12.1"-XGA TFT-HYUNDAI-HT12X12-TRIGEM CSG	72-112230-30TRI				
	2	Key parts label	N/A	1	Attach key parts label	N/A	barcode machine
HYUNDAI LCD	3	N222S1-HARNESS FOR HYUNDAI 12.1"-SH650	29-001650-03	1	Attach LCD HARNESS on LCD connector as shown in the diagram	N/A	N/A
TOSHIBA LCD		N222S1-HARNESS FOR HSD 12.1" LCD-SH640C	29-001640-01				
	4	N222S8P-MYLAR FOR LCD HARNESS	50-023324-00	1	Place white Mylar in between LCD wires and LCD Panel	All LCD wires must be on white Mylar	N/A
	5	Wide, white tape (2X4cm)	93-000256-20	1	Attach tape to LCD wires and LCD connector as shown in the diagram.	N/A	N/A
	6	ELECTRICAL TAPE 3M NO E17385 W=10mm(1X6cm)	61-080022-00	2	Attach tapes on LCD wires as shown in the diagram.	N/A	N/A
	7	E12B SPONGE-R FOR LCD	51-036240-00	1	Attach sponge as shown in the diagram.	N/A	N/A
	8	E12B SPONGE-L FOR LCD	51-036241-00	1	Attach sponge as shown in the diagram.	N/A	N/A

Name of SOP: efo!121i LCD MODULE ASS'Y SOP	Working name: 6512-5	Revision: 1	Date: 2004.03.25	(Manufacturing Section): PE
--	----------------------	-------------	------------------	-----------------------------

Explanation of illustrations



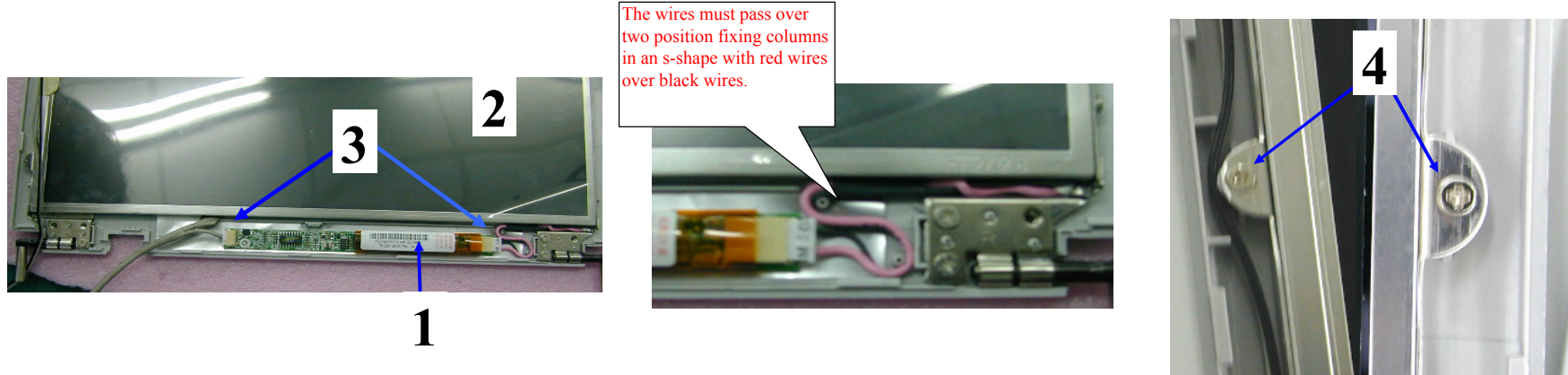
Difference	Operating item	Part name/specification	Part/number	Q'TY	Operation description	Important note	Jig/fixture
HYUNDAI LCD	1	E12T-LCD BRACKET-L-C3773	40-030882-02	1	Assemble LCD left-side rack and lock in place with two screws.	N/A	N/A
TOSHIBA LCD		E12B-LCD BRACKET L FOR TOSHIBA	40-031261-00				
	2	SCREW ISOT-M2X3L-SELF-LOCKING ϕ D3.5mm t=0.8mm	41-721520-03	2		N/A	Electrical screwdriver/torque: 1.5±0.5Kgf-cm
HYUNDAI LCD	3	E12T-LCD BRACKET R-C3772	40-030881-01	1	Assemble LCD right-side rack and lock in place with two screws.	N/A	N/A
TOSHIBA LCD		E12B-LCD BRACKET R FOR TOSHIBA	40-031260-00				
	4	SCREW ISOT-M2X3L-SELF-LOCKING ϕ D3.5mm t=0.8mm	41-721520-03	2		N/A	Electrical screwdriver/torque: 1.5±0.5Kgf-cm
	5	CONDUCTIVE SPONGE (10X1X20mm)	51-350094-06	1	Attach a 20mm long sponge above the LCD connector as shown in the diagram.	N/A	N/A



Twinhead International Corp.

(Twinhead S.O.P) (Document NO): TESOP388

Name of SOP: efio!121i LCD MODULE ASS'Y SOP	Working name: 6512-6	Revision: 1	Date: 2004.03.25	(Manufacturing Section): PE
--	----------------------	-------------	------------------	-----------------------------

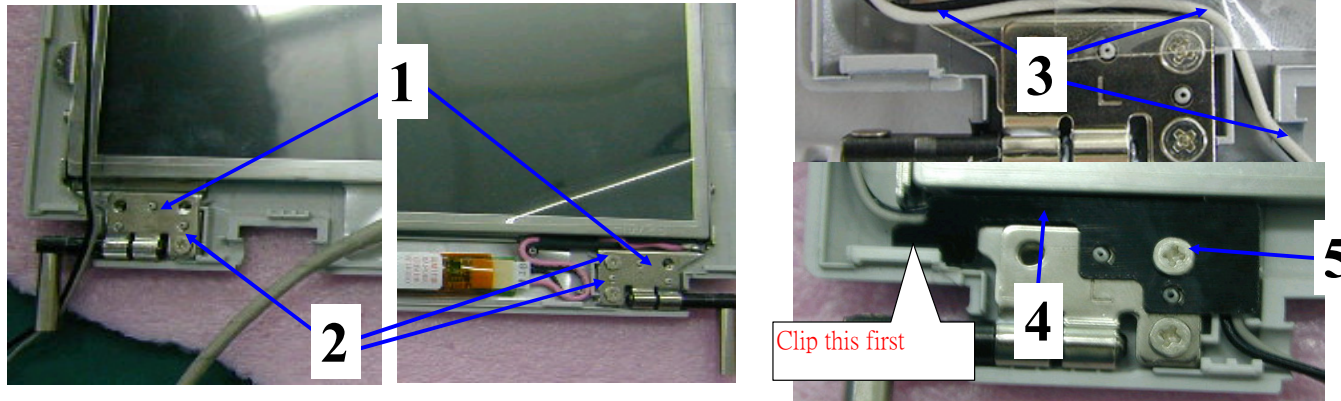


Difference	Operating item	Part name/specification	Part/number	Q'TY	Operation description	Important note	Jig/fixture
	1	INVERTER-5V-5W-10X123mm-FOR 12.1" LCD-REV:1A-IV	76-030105-01	1	Assemble LCD panel in LCD cover .	N/A	N/A
	2	N/A	N/A	1	Insert LCD wires port into terminal; tear off adhesive tape and install onto base column as shown in the diagram.	Wires must pass over two fixed position columns	N/A
	3	N/A	N/A	1	Assemble finished LCD into LCD COVER	Rack's hole must align to LCD COVER; LCD panel must not press on wires.	N/A
	4	SCREW ISOT-M2X3L-SELF-LOCKING § D3.5mm t=0.8mm	41-721520-03	2	Lock two screws on LCD COVER to fix LCD	N/A	Electrical screwdriver/torque: 1.5±0.5Kgf-cm

(Twinhead S.O.P) (Document NO): TESOP388

Name of SOP: efio!121i LCD MODULE ASS'Y SOP	Working name: 6512-7	Revision: 1	Date: 2004.03.25	(Manufacturing Section): PE
--	----------------------	-------------	------------------	-----------------------------

Explanation of illustrations

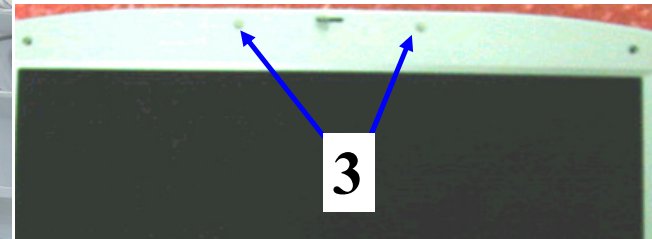
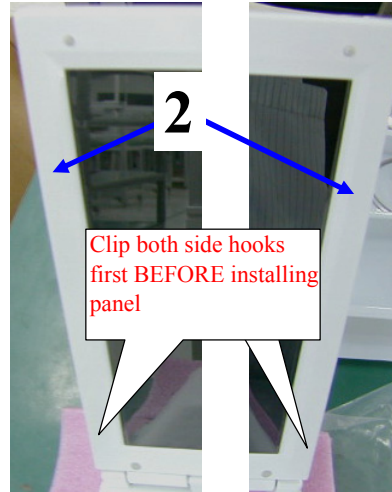
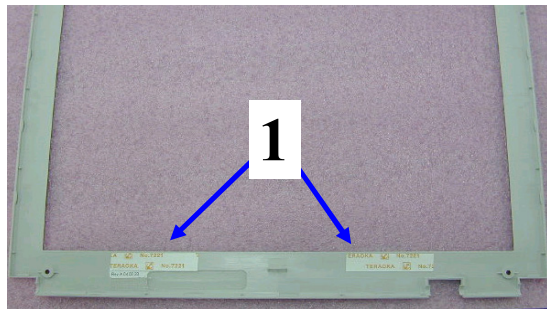


Difference	Operating item	Part name/specification	Part/number	Q'TY	Operation description	Important note	Jig/fixture
	1	E12T-HINGE L	40-015091-00	1	Install left and right hinges on LCD COVER as shown in the diagram.	Note the differences between left and right hinges.	N/A
		E12T-HINGE R	40-015090-00	1			
	2	SCREW ISOT-M2.6X4L H=0.8mm-NYLOK(COATING)	41-720526-04	3	Lock HINGE with three screws as shown in the diagram.	Screws must lock into position	Electrical screwdriver/torque: 2.0±0.5Kgf-cm
	3	NA	NA	NA	Arrange antenna wires on HINGE as shown in the diagram.	N/A	N/A
	4	E12T-HARNESS PLATE FOR LCD	50-000315-01	1	Install HARNESS COVER onto HINGE, covering antenna wires as shown in the diagram.	Do not press on wires	N/A
	5	SCREW ISOT-M2.6X4L H=0.8mm-NYLOK(COATING)	41-720526-04	1	Lock screws on HARNESS COVER as shown in the diagram	N/A	N/A

(Twinhead S.O.P) (Document NO): TESOP388

Name of SOP: efio!121i LCD MODULE ASS'Y SOP	Working name: 6512-8	Revision: 1	Date: 2004.03.25	(Manufacturing Section): PE
--	----------------------	-------------	------------------	-----------------------------

Explanation of illustrations

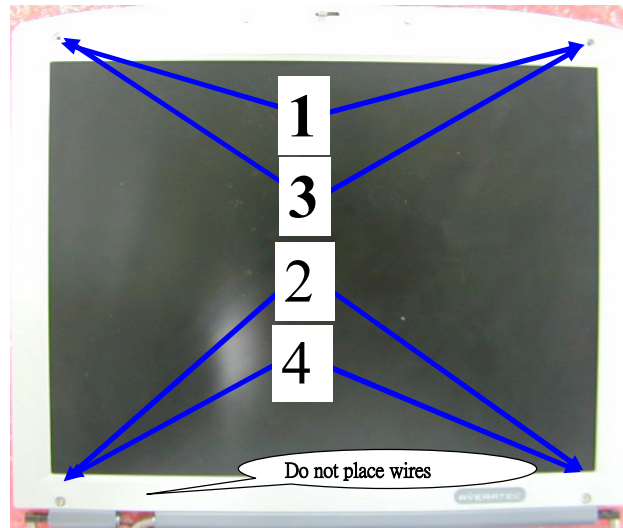


Difference	Operating item	Part name/specification	Part/number	Q'TY	Operation description	Important note	Jig/fixture
	1	N222S9-DOUBLE SIDE ADHESIVE-W=10mm-TERAOKA NO.7221 (30 x 10 x 0.15mm)	27-300110-00	2	Lock two screws on each side of the LCD PANEL as shown in the diagram	N/A	Electrical screwdriver/torque: 1.5±0.5Kgf-cm
According to BOM	2	E12B-LCD BEZEL FOR TH-#8019	50-022330-00	1	Lock screws on LCD PANEL's hinge as shown in the diagram	N/A	Electrical screwdriver/torque: 2.0±0.5Kgf-cm
		E12B-LCD PANEL FOR TCL-#8750	50-022330-20				
		E12B-LCD BEZEL FOR TONG FANG-#8148	50-022330-10				
	3	P22AJ-RUBBER (TOP)-PANTONE 428C	52-002083-00	2	Attach two pieces of rubber on LCD PANEL's screws as shown in the diagram	Push the rubber into the proper position	N/A
E12B2		E12B-RUBBER (TOP)-BLACK	52-002083-30				

(Twinhead S.O.P) (Document NO): TESOP388

Name of SOP: efiol121i LCD MODULE ASS'Y SOP	Working name: 6512-9	Revision: 1	Date: 2004. 03. 25	(Manufacturing Section): PE
---	----------------------	-------------	--------------------	-----------------------------

Explanation of illustrations



Difference	Operating item	Part name/specification	Part/number	Q'TY	Operation description	Important note	Jig/fixture
	1	SCREW M2.0*4 NI+NYLOK 1 (KH)	41-720520-04	2	Lock up two screws on LCD PANEL as diagram shows	N/A	Electrical screwdriver/torque: 1.5±0.2Kgf-cm
	2	SCREW ISOT-M2.6X5L H=0.8mm-NYLOK(COATING)	41-721526-05	2	Lock screws on LCD hinge as diagram shows.	N/A	Electrical screwdriver/torque: 2.0±0.2Kgf-cm
	3	P22AJ-RUBBER (TOP)-PANTONE 428C	52-002083-00	2	Attach two pieces of RUBBER above LCD PANEL as shown in the diagram.	N/A	N/A
E12B2		E12B-RUBBER (TOP)-BLACK	52-002083-30				
	4	P77-RUBBER PAD	50-020385-00	2	Attach two pieces of RUBBER above LCD PANEL as shown in the diagram.	N/A	N/A
E12B2		P22AJ-RUBBER PAD-PANTONE 428C	50-020385-F0				



Twinhead International Corp.

(Twinhead S.O.P) (Document NO): TESOP388

Name of SOP: efio!121i LCD MODULE ASS'Y SOP	Working name: 6512-10	Revision: 1	Date: 2004.03.25	(Manufacturing Section): PE
--	-----------------------	-------------	------------------	-----------------------------

Explanation of illustrations



Difference	Operating item	Part name/specification	Part/number	Q'TY	Operation description	Important note	Jig/fixture
	1	N/A	N/A	1	Check appearance to make sure there are no scratches; attach an LCD protective cover on the back-side.	N/A	N/A
	2	N/A	N/A	1	Place LCD into protective bag	N/A	N/A



Twinhead International Corp.

efio!121i Additional Operations Instruction Manual		DOCUMENT CODE:TESOP387	
		REVISION: 0	
		RELEASE DATE:	
		PAGES: 12	
DESCRIPTION	PREPARED BY	CONCURRED BY	APPROVED BY
1.NEW RELEASE	PE:		



Twinhead International Corp.

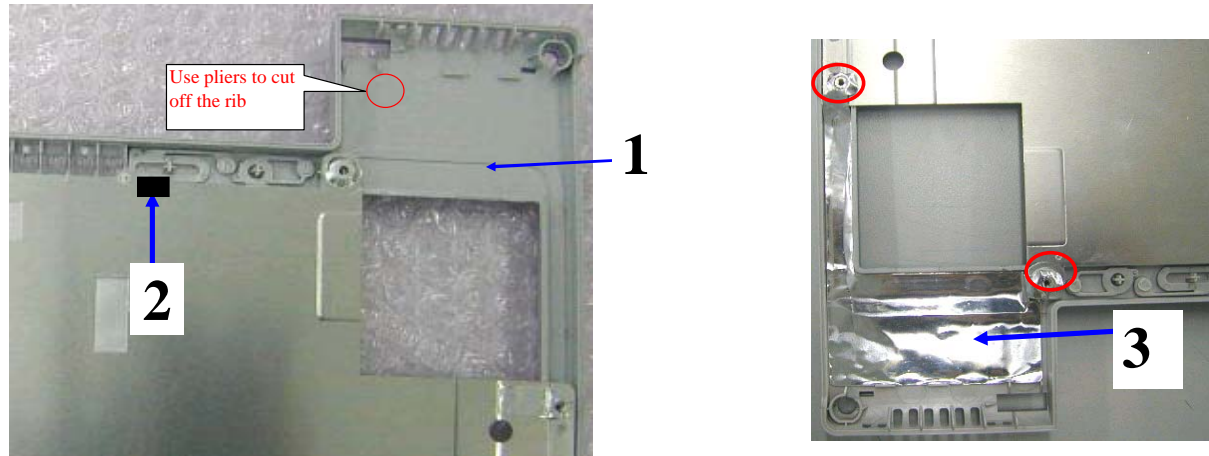
(Document NO.):TESOP387

Name of S.O.P: efio!121i SUB ASSEMBLY SOP		Page/version								REV: 0
		Page	Version	Page	Version	Page	Version	Page	Version	
1. Instruction manual	P.01	1	0							
2.Fabricated material setup instruction (19 people required)	P.2~P.12	2	0							
1.6501 Upper Cover Assembly (2 people)	P.02	3	0							
2.6502 LOWER COVER Assembly (3 people)	P.03 ~ P.04	4	0							
3.6504 CD-ROM Assembly (2 people)	P.05~ P.06	5	0							
4.6506 HDD Assembly (1 people)	P.07	6	0							
5.6551 PALM REST Assembly (5 people)	P.08~ P.12	7	0							
		8	0							
		9	0							
		10	0							
		11	0							
		12	0							
BOM calls for real fabric; the numbers in the S.O.P are for reference only										
This manual is for efio!121i model System setup										

(Twinhead S.O.P) (Document NO): TESOP387

Name of S.O.P: efio!121i UPPER COVER SOP	Working name: 6501-1	Revision: 0	Date: 2004.2.26	(Manufacturing Section): PE
--	----------------------	-------------	-----------------	-----------------------------

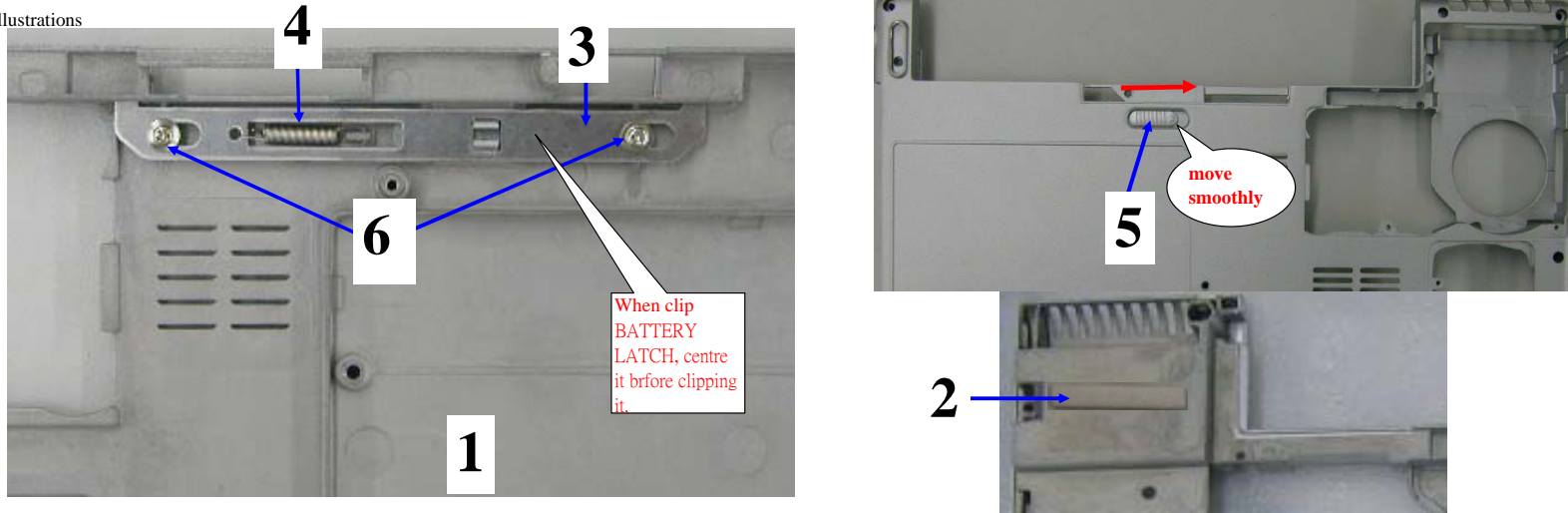
Explanation of illustrations



Difference	Operating item	Part name/specification	Part/number	QTY	Operation description	Important note	Jig/fixture
E12B2	1	E12B-UPPER COVER ASS'Y- #8019/#8131-E1098-05A	50-964301-02	1	Make sure UPPER COVER is not damaged or distorted; clean with alcohol.	N/A	N/A
		E12B-#8750/#8051 UPPER COVER ASS'Y	50-964301-80				
		E12B-UPPER COVER ASS'Y- #8148-E1098-120	50-964301-41				
	2	E12T SPONGE FOR POWER BUTTON	51-036212-00	1	Attach sponge on POWER BUTTON as shown in the diagram.	Do not attach on power button's stud.	N/A
	3	E12B-UPPER AL FOIL-E4838	40-008180-00	1	Attach aluminum foil on upper cover as shown in the diagram.	Red circles must align with screw holes.	N/A
	4	N/A	N/A	1	Place UPPER COVER into loading device.	N/A	Pliers

Name of S.O.P: efio!12li UPPER COVER SOP	Working name: 6502-1	Revision: 0	Date: 2004.2.26	(Manufacturing Section): PE
--	----------------------	-------------	-----------------	-----------------------------

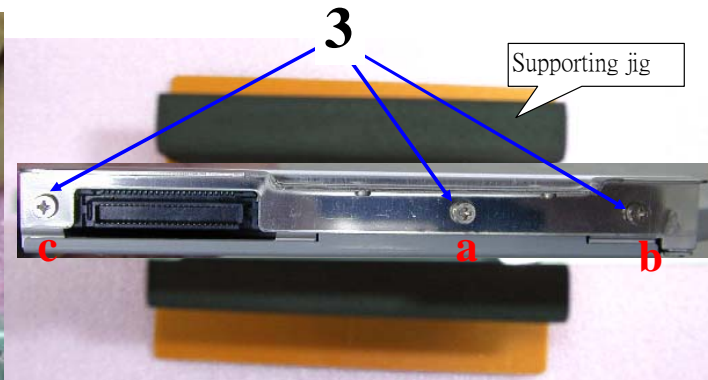
Explanation of illustrations



Difference	Operating item	Part name/specification	Part/number	Q'TY	Operation description	Important note	Jig/fixture
E12B2	1	E12B-LOWER COVER-#8019-B1328A	40-002470-01	1	Check appearance to make sure there are no scratches.	N/A	N/A
		E12B-LOWER COVER-#8750M	40-002470-10				
	2	CONDUCTIVE SPONGE 10X1X30mm	51-350094-06	1	Attach conductive sponge as shown in the diagram	N/A	N/A
	3	N222S1-BATTERY HOOK	40-006040-00	1	First fix opposite side of spring to base as shown in the diagram. Then attach a spring onto HOOK and fix them together on base.	Note the spring's direction.	N/A
	4	N222S1-BATTERY LATCH SPRING-D47900	40-011951-00	1		N/A	
E12B2	5	E12T-BATTERY LATCH	50-043080-01	1	Install BATTERY LATCH	Note direction: Arrow side faces right.	N/A
		E12B-BATTERY LATCH-#8750	50-043080-10				
	6	SCREW BPS/W (\$ 5.5)-M2X3L-NYLOK	41-420520-03	2	Lock screws on HOOK in a.b. order.	N/A	Electrical screwdriver/Torque: 1.5± 0.5Kgf-cm

Name of S.O.P:efio!12li UPPER COVER SOP	Working name: 6504-1	Revision: 0	Date: 2004.2.26	(Manufacturing Section): PE
---	----------------------	-------------	-----------------	-----------------------------

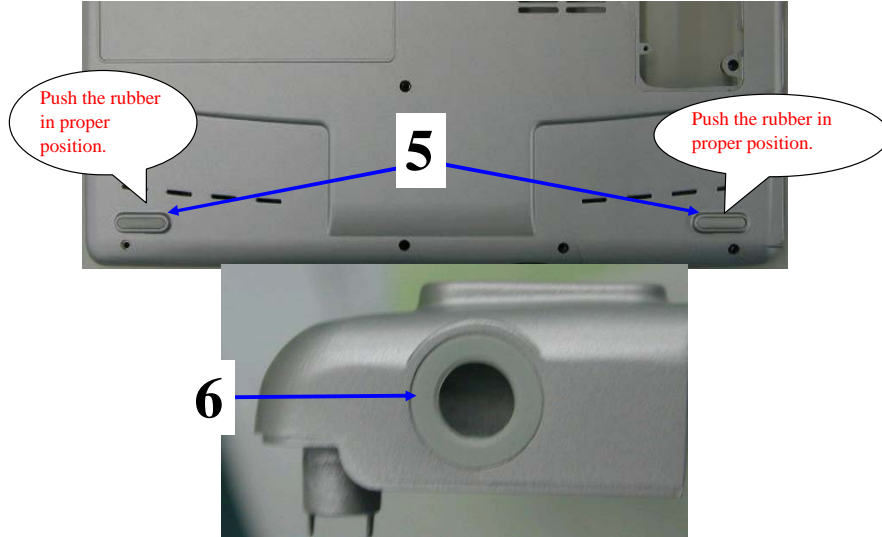
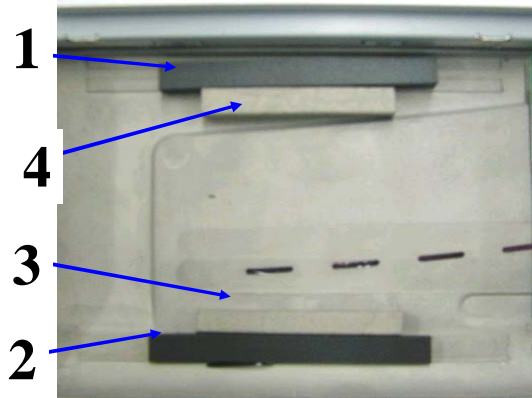
Explanation of illustrations



Difference	Operating item	Part name/specification	Part/number	Q'TY	Operation description	Important note	Jig/fixture
According to BOM	1	DVD-ROM-8X-SDR-083-QUANTA	70-200030-00	1	Take a CD-ROM and check its appearance	Do not impact the CD-ROM when carrying.	N/A
		SUPER MULTI-(CD-RW/DVD-RW/DVD+RW/DVD-RAM)-(4X/2)	70-250002-00				
E12B2		COMBO(CD-ROM/CD-RW/DVD-ROM)-SBW-242B-QUANTA	70-210020-00				
	2	N222S1-CD-ROM BRACKET	40-030692-01	1	Assemble rack on CD-ROM	N/A	U-shape supporting jig
	3	SCREW ISOT-M2X3L-SELF-LOCKING	41-721520-03	3	Lock screws on rack in a.b.c. order as shown in the diagram	N/A	Electrical screwdriver/Torque: 1.5± 0.5Kgf-cm

Name of S.O.P: efiol12li UPPER COVER SOP	Working name: 6502-2	Revision: 0	Date: 2004.2.26	(Manufacturing Section): PE
--	----------------------	-------------	-----------------	-----------------------------

Explanation of illustrations



Difference	Operating item	Part name/specification	Part/number	QTY	Operation description	Important note	Jig/fixture
	1	E12T-HDD SPONGE FOR LOWER UP SIDE-D4688A	51-036041-10	1	Attach conductive sponge on lower cover as shown in the diagram	N/A	N/A
	2	E12T-HDD SPONGE FOR LOWER DOWN SIDE-D4689A	51-036042-10	1	Attach conductive sponge on lower cover as shown in the diagram	N/A	N/A
	3	CONDUCTIVE SPONGE (5X3.5X40mm)	51-350094-02	1	Attach conductive sponge on lower cover as shown in the diagram	Push the rubber in proper position.	N/A
	4	CONDUCTIVE SPONGE (6X6.5X40mm)	51-350094-04	1	Attach conductive sponge on lower cover as shown in the diagram	Push the rubber in proper position.	N/A
	5	P22AJ-RUBBER FOOT-PANTONE 428C	52-000000-20	2	Attach rubber foot pad	Push the rubber in proper position.	N/A
E12B2		N222S1-RUBBER FOOT	52-000000-00				
	6	E12T-DC INDICATOR-PANTONE 428C	50-023107-10	1	Attach round shaped Mylar as shown in the diagram.	N/A	N/A
E12B2		E12B-DC INDICATOR-BLACK	50-023107-20	1			
	7	N/A	N/A	1	Place lower down side into protective bag and place into loading device.	N/A	N/A



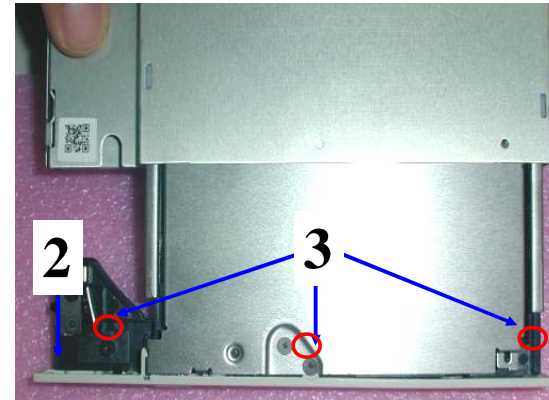
Twinhead International Corp.

(Twinhead S.O.P)

(Document NO):TESOP387

Name of S.O.P:efio!121i UPPER COVER SOP	Working name: 6504-2	Revision: 0	Date: 2004.2.26	(Manufacturing Section): PE
---	----------------------	-------------	-----------------	-----------------------------

Explanation of illustrations



Difference	Operating item	Part name/specification	Part/number	Q'TY	Operation description	Important note	Jig/fixture
	1	N/A	N/A	N/A	Take CD-ROM; eject disc tray	N/A	N/A
According to BOM	2	E12T-#8019 KME DVD-RW BEZEL ASS'Y	50-964101-80	1	Install BEZEL on CD-ROM tray base.	Make sure bezel serial number is correct and corresponds with CD-ROM serial number. Do not bend or distort BEZEL	N/A
		E12T-#8019 QUANTA COMBO BEZEL ASS'Y	50-964101-30				
		E12T-#8019 QUANTA DVD BEZEL ASS'Y	50-964101-70				
E12B2		E12B-#8750 QUANTA COMBO BEZEL ASS'Y-E1098-27	50-964301-A0				
		E12B-#8750 QUANTA DVD BEZEL ASS'Y-E1098-26	50-964301-B0				
	3	SCREW-BTB-1.7X3L-BLACK	41-650217-03	3	Lock screws on BEZEL as shown in the diagram. (When assembling QUANTA DVD-ROM BEZEL or D212A-PAN/ASONIC COMBO BEZEL, only this screw is needed)	Eject tray a distance of 30mm and place it on table surface.	Electrical screwdriver/Torque: 1.0± 0.3Kgf-cm

(Twinhead S.O.P) (Document NO):TESOP387

Name of S.O.P: efio!121i UPPER COVER SOP	Working name: 6506-1	Revision: 0	Date: 2004.2.26	(Manufacturing Section): PE
--	----------------------	-------------	-----------------	-----------------------------

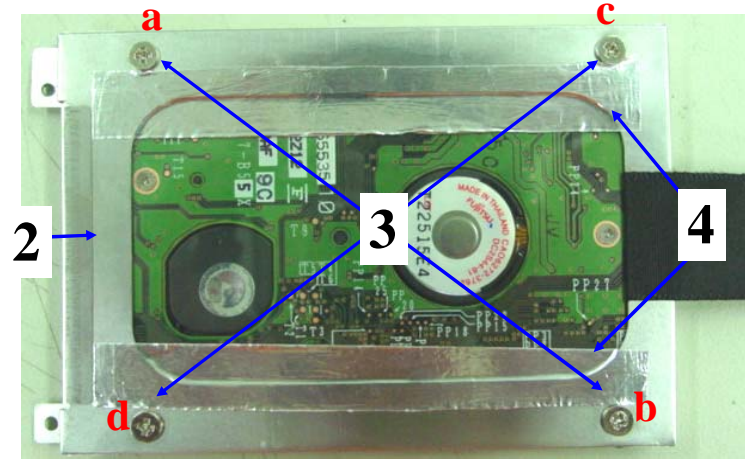
Explanation of illustrations

Copy terminal

Work no.

Barcode

HDI



Difference	Operating item	Part name/specification	Part/number	QTY	Operation description	Important note	Jig/fixture
	1	HDD-60GB-4200RPM-2.5" 9.5X100X70mm-MHT2060AT-FU	70-A22600-10	1	Check HDD to make sure there are no scratches. Check the metal pins to make sure they are not banded.	Select based on customer's needs.	N/A
		HDD-40GB-2.5"-9.5X100X70mm- MHT2040AT-FUJITSU	70-922400-50				
		HDD-30GB-2.5"- 9.5X100X70mm-MHT2030AT- FUJITSU	70-822300-60				
	2	N222S1-HDD BRACKET	40-030691-01	1	Install KEY PARTS LABEL as shown in the diagram	N/A	N/A
	3	SCREW ISOF-M3X4L	41-870130-04	4	Tighten HDD BRACKET screws in a.b.c.d. order as shown in the diagram.	N/A	Electrical screwdriver/Torque: 1.5 ±0.5Kgf-cm
	4	D212A-AL FOIL FOR HDD BRACKET-E4639	40-008140-00	2	Attach aluminum foil as shown in the diagram	N/A	N/A
	5	HDD IMAGE	65-000162-00	1	Copy HDI	According to BOM	HDD COPY machine
	6	MO LABEL	63-000710-00	1	Attach as shown in the diagram. When HDD COPY is completed, attach HDD LABEL as shown in the diagram	N/A	N/A

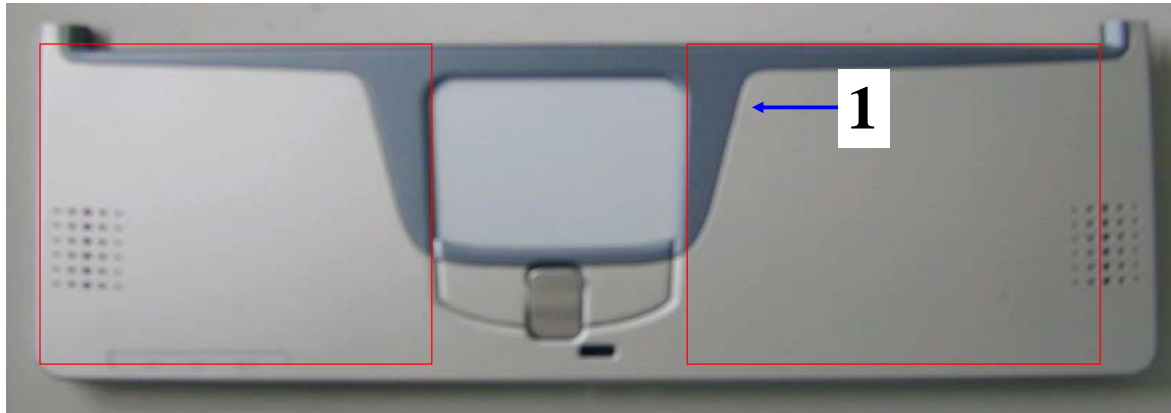


Twinhead International Corp.

(Twinhead S.O.P) (Document NO): TESOP387

Name of S.O.P: efio!121iUPPER COVER SOP	Working name: 6551-1	Revision: 0	Date: 2004.2.26	(Manufacturing Section): PE
---	----------------------	-------------	-----------------	-----------------------------

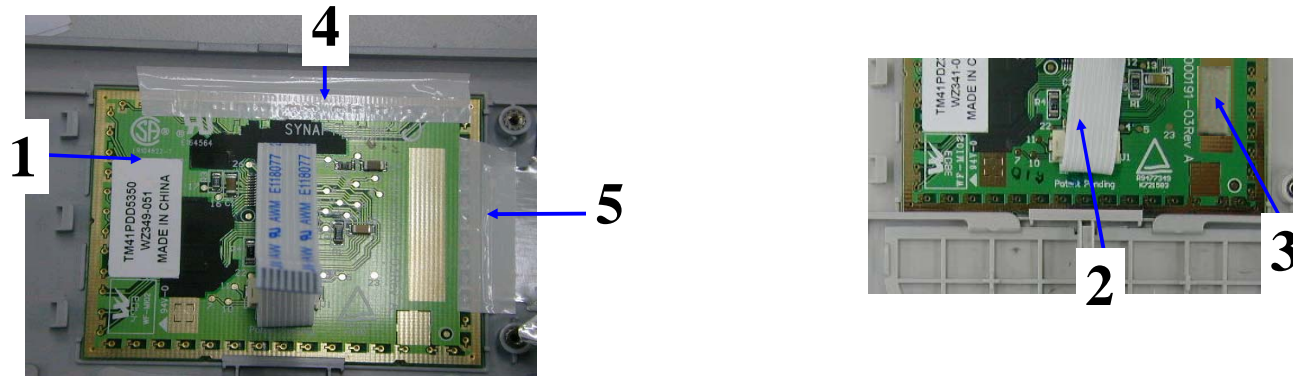
Explanation of illustrations



Difference	Operating item	Part name/specification	Part/number	QTY	Operation description	Important note	Jig/fixture
According to BOM	1	E12B-PALM REST ASS'Y-#8019/#8131-E1098-04A	50-964301-11	1	Check appearance to make sure there are no scratches or finger prints	N/A	N/A
		E12B-PALM REST ASS'Y-#8148-E1098-110	50-964301-51				
		E12B-#8750/#8051 PALM REST ASS'Y-E1098-22	50-964301-90				
E12B2	2	Protective cover	N/A	2	Attach Protective cover on both sides of palm rest .	N/A	Razor blade

Name of S.O.P: efio!121i UPPER COVER SOP	Working name: 6551-1	Revision: 0	Date: 2004.2.26	(Manufacturing Section): PE
--	----------------------	-------------	-----------------	-----------------------------

Explanation of illustrations

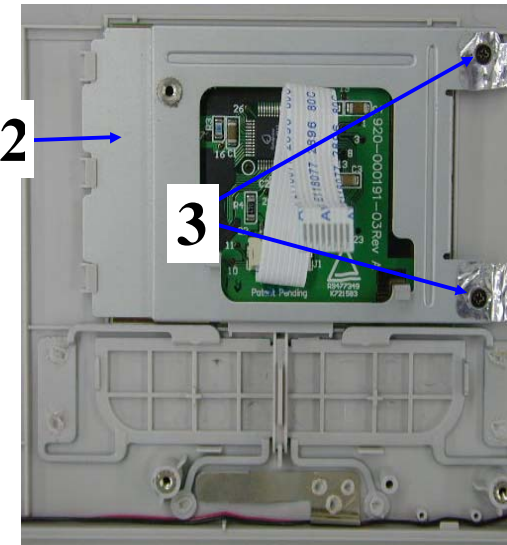
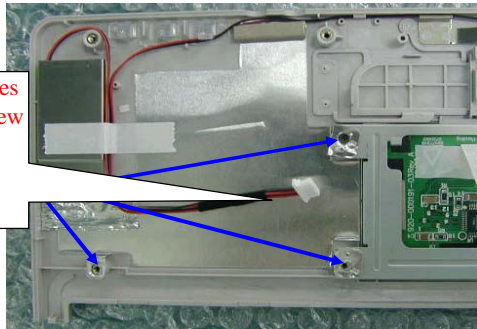


Difference	Operating item	Part name/specification	Part/number	QTY	Operation description	Important note	Jig/fixture
E12B2	1	TOUCH PAD-SOTEC P-03012-SYNAPTICS-TM41PDD5350-E	73-080052-20	1	Take touch pad and install into palm rest.	N/A	N/A
		TOUCH PAD-GREEN-SYNAPTICS-TM41PDG-350-9100	73-080050-00				
	2	P22AJ-FFC (P=1.0) FOR TOUCHPAD	29-016338-00	1	Insert wires into TOUCH PAD's terminal as shown in the diagram.	Blue wire's edge must be parallel to terminal.	N/A
	3	CONDUCTIVE SPONGE (5X3.5X15mm)	51-350094-02	1	Attach conductive sponge onto TOUCH PAD as shown in the diagram	N/A	N/A
	4	Tape(12x50mm)	61-080022-00	1	Attach tape as shown in the diagram.	N/A	N/A
	5	Tape(12x50mm)	61-080022-00	1	Attach tape as shown in the diagram.	N/A	N/A

Name of S.O.P: efio!121i UPPER COVER SOP	Working name: 6551-2	Revision: 0	Date: 2004.2.26	(Manufacturing Section): PE
--	----------------------	-------------	-----------------	-----------------------------

Explanation of illustrations

Aluminum foil holes must align with screw holes.

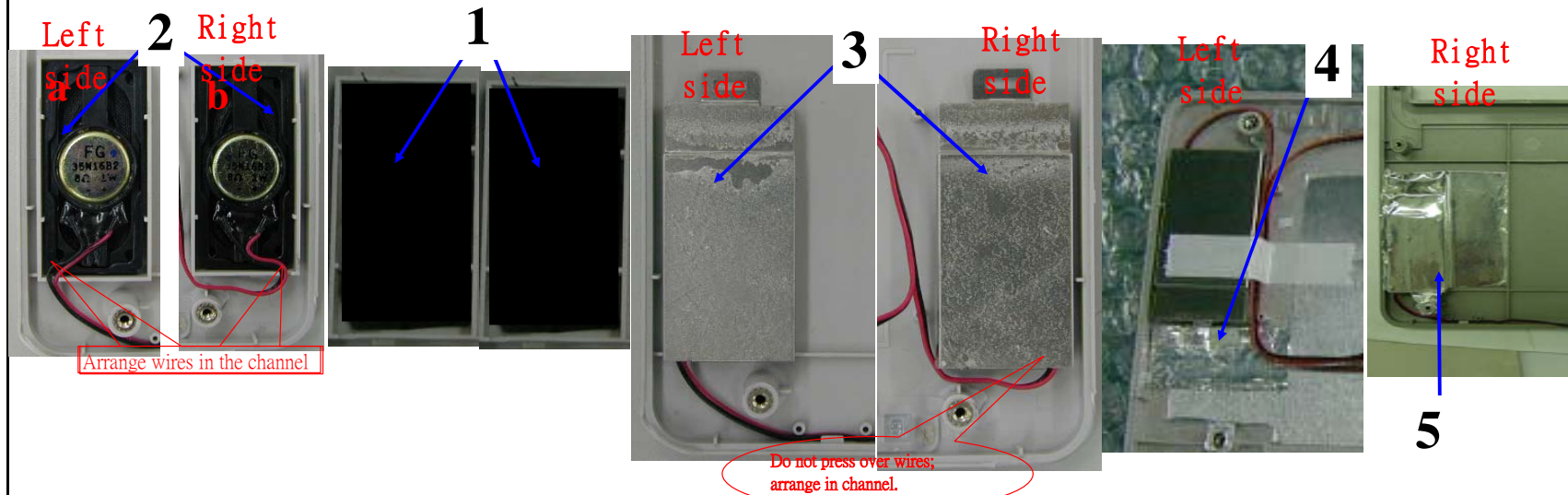


Difference	Operating item	Part name/specification	Part/number	Q'TY	Operation description	Important note	Jig/fixture
	1	Tape (3~4cm)	61-080022-00	1	Attach tape on touchpad's connector as shown in the diagram.	N/A	N/A
	2	E12T-TOUCHPAD BRACKET-C3776A	40-030885-01	1	Check the metal slice to make sure the shape has not changed; attach as shown in the diagram	N/A	N/A
	3	SCREW ISOTT-M2.0X2L \$ D3.4/H0.4mm-BLACK NI+SELF	41-760020-02	2	Lock screws on rack as shown in the diagram.	Attach aluminum foil onto racks; align with holes before locking screws.	Electrical screwdriver/Torque: 1.5 ±0.5Kgf-cm

(Twinhead S.O.P) (Document NO):TESOP387

Name of S.O.P: efiol121i UPPER COVER SOP	Working name: 6551-3	Revision: 0	Date: 2004.2.26	(Manufacturing Section): PE
--	----------------------	-------------	-----------------	-----------------------------

Explanation of illustrations



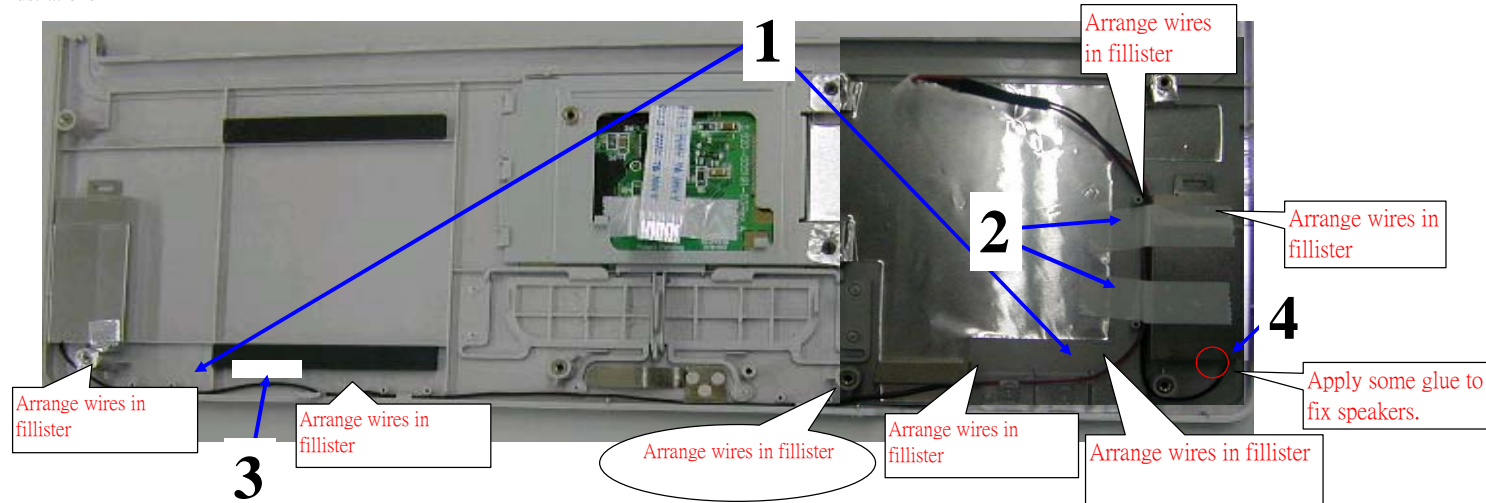
Difference	Operating item	Part name/specification	Part/number	Q'TY	Operation description	Important note	Jig/fixture
	1	E12T-SPEAKER MESH-BLACK-E46930	51-005060-00	2	Place speaker mesh into speaker trough; then install SPEAKER on PALM REST as shown in the diagram	Place short wire at left, long wire at right.	N/A
	2	SPEAKER (R) (L)-W/RUBBER	22-300000-00	1			
	3	E12T-BRACKET FOR PALMREST SPEAKER	40-030884-00	2	Clip speaker support rack above speaker as shown in the diagram.	Clip in the rack's lower hook first.	N/A
	4	P14N-UPPER EMI AL FOIL	40-008051-00	1	Attach aluminum foil as shown in the diagram.	Aluminum foil must cover the iron slice and maintain contact with palm rest's aluminum foil.	N/A
	5	E12B-AL FOIL FOR PALMREST-IN SPEAKER SIDE-E4839	40-008181-00	1	Attach aluminum foil as shown in the diagram.	N/A	N/A

(Twinhead S.O.P)

(Document NO):TESOP387

Name of S.O.P: efio!121iUPPER COVER SOP	Working name: 6551-4	Revision: 0	Date: 2004.2.26	(Manufacturing Section): PE
---	----------------------	-------------	-----------------	-----------------------------

Explanation of illustrations



Difference	Operating item	Part name/specification	Part/number	QTY	Operation description	Important note	Jig/fixture
	1	N/A	N/A	1	Arrange speaker's wires as shown in the diagram.	Arrange wires in fillister	N/A
	2	Tape(4cm)	61-080022-00	2	Use tape to fix speaker's wires as shown in the diagram.	N/A	N/A
	3	Tape(4cm)	61-080022-00	1	Use tape to fix speaker's wires as shown in the diagram.	N/A	N/A
	4	N/A	N/A	1	Re-check to make sure palm rest is properly installed and put it inside PE bag and loading device	N/A	N/A



Twinhead International Corp.

DESCRIPTION		PREPARED BY	CONCURRED BY	APPROVED BY
1. NEW RELEASE		PE:	NA	

efio!121i System Setup Instruction Manual	DOCUMENT CODE: TESOP389
	REVISION: 0
	RELEASE DATE:
	PAGES: 19



Twinhead International Corp.

(Document NO.): TESOP389

efio!121i Content of System Ass'y S.O.P.

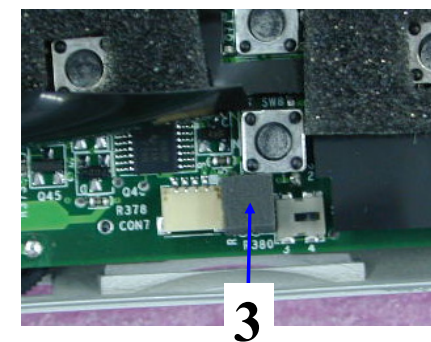
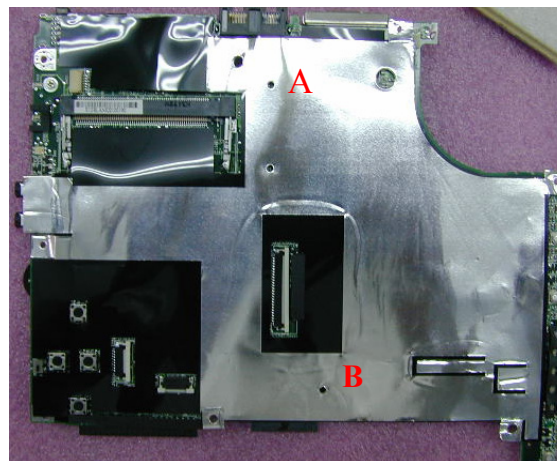
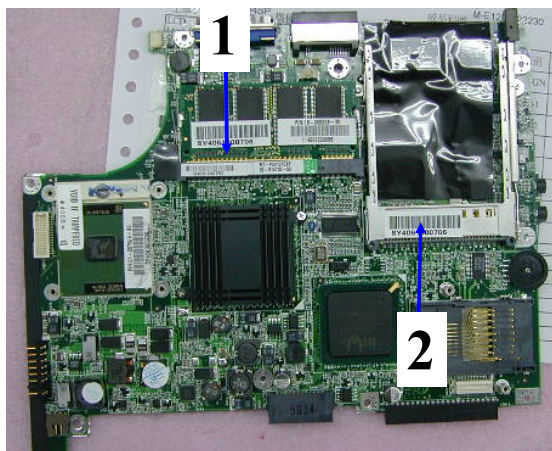
Page\version

REV: 0

		Page	Version	Page	Version	Page	Version	Page	Version
1.Instruction manual	P.01								
2.Fabricated material setup instructions (19 people required)	P.02~P.19	1	0	19	0				
		2	0						
3. References:		3	0						
1. (D/C NO:KE3-0113)		4	0						
2. (D/C NO:KE3-0010)		5	0						
3. KE3-0058		6	0						
		7	0						
4.Tools: Electrical screwdriver. tape. clip		8	0						
		9	0						
		10	0						
		11	0						
		12	0						
		13	0						
		14	0						
		15	0						
		16	0						
		17	0						
BOM calls for real fabric; the numbers in the S.O.P are for reference only		18	0						
This manual is for efio!121i model System Setup		PAGE: 01							

Name of S.O.P: efiol121i System Ass'y SOP	Working name: 7051	Revision: 0	Date: 2004.2.26	(Manufacturing Section): PE
---	--------------------	-------------	-----------------	-----------------------------

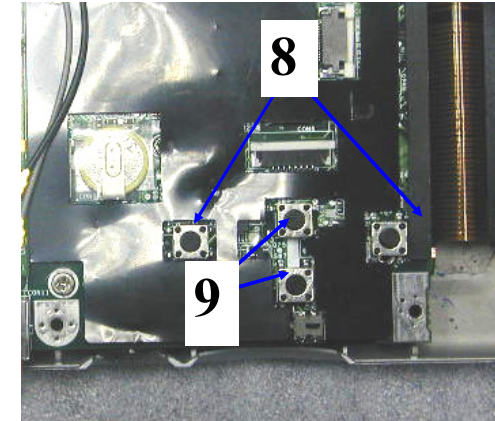
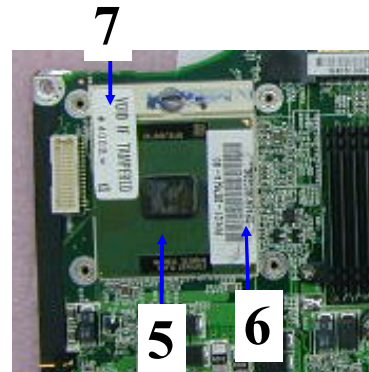
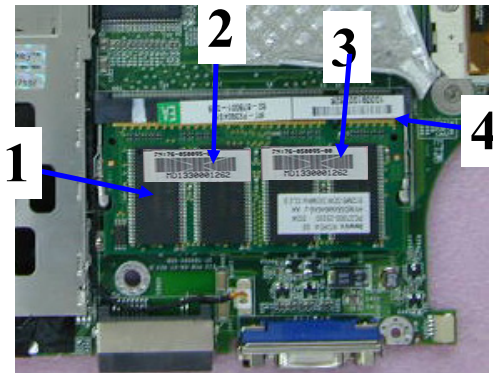
Explanation of illustrations



Difference	Operating item	Part name/specification	Part/number	Q'TY	Operation description	Important note	Jig/fixture
	1	E12B-PCB ASS'Y-GM-PM-REV: 0-W/BIOS SET	82-814700-00	1	Get M/B. Make sure check MYLAR is correctly attached. Check Memory Attach for deformities. Make sure Mylar is correctly attached to Memory Attach. If all are correct wipe the BARCODE.	MYLAR must not cover LED light. Check PCMCIA and MEMORY. Make sure rack is not deformed and attach.	N/A
	2	PRODUCT BAR CODE LABEL	63-000710-00	1	Attach PRODUCT BAR CODE LABEL on M/B as shown in the diagram	N/A	N/A
	3	E12T-SPONGE-FOR PALMREST SPRING SHEET-KS-0026(5x5x6mm)	51-036216-00	1	Reveal black MYLAR. Attach a black sponge on the right of the sleep mode button as shown in the diagram. Wipe M/B Bar code	N/A	BARCODE Machine

Name of S.O.P: efiol121i System Ass'y SOP	Working name: 7052	Revision: 0	Date: 2004.2.26	(Manufacturing Section): PE
---	--------------------	-------------	-----------------	-----------------------------

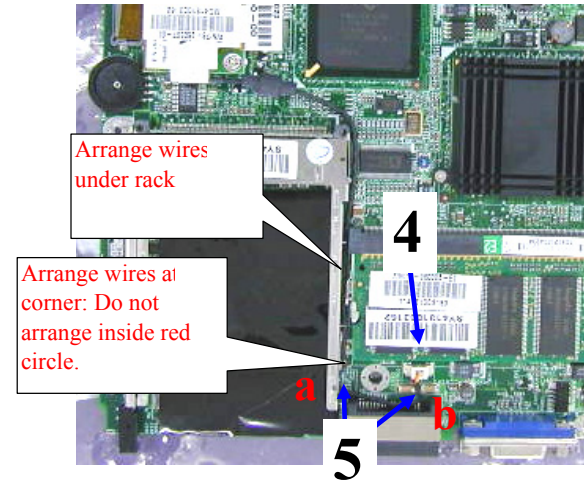
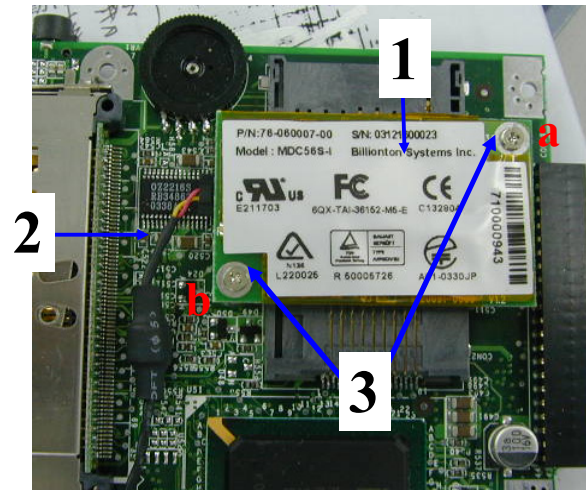
Explanation of illustrations



Difference	Operating item	Part name/specification	Part/number	Q'TY	Operation description	Important note	Jig/fixture
	1	SDRAM DDR SO-DIMM-HYMD232M646C(L)6-J-256MB-DDR333-2.5V+-0.2V-200P	18-060005-E0	1	Using anti-static cloth, carefully wipe connecting parts	N/A	Anti-Static Cloth
		DDR SO-DIMM-HYMD564M646A(L)6-J-512MB-DDR333-2.5V+-0.2V-200P	18-060006-30				
	2	BAR CODE LABEL	63-250190-00	1	Attach BAR CODE LABEL as shown in the diagram	N/A	N/A
	3	BAR CODE LABEL	63-000710-00	1	Attach BAR CODE LABEL as shown in the diagram	N/A	N/A
	4	NA	NA	1	Insert SDRAM into M/B SOCKET	Connecting parts must be clean	N/A
	5	CPU-BANIAS PGA-1.6GHZ/600MHZ-uFC-PGA-RH80535GC0	01-0076J3-G0	1	When assembling the CPU, turn in a clockwise direction to lock; turn anti-clockwise direction to unlock.	Do not touch center part of CPU chip	N/A
	6	E12T-VOID LABEL FOR TRIGEM-KL1890	63-001584-10	1	Attach LABEL as shown in the diagram	Do not attach to center part of CPU chip	N/A
	7	KEY PARTS LABEL	63-250190-00	1	Attach K/P LABEL on CPU	Do not attach to center part of CPU chip	N/A
	8	E12B-MYLAR FOR TOUCH PAD-KS-0025(0.4mm)	50-023476-00	2	Attach MYLAR on two black buttons	Push the rubber into the proper position.	N/A
	9	E12B-MYLAR FOR TOUCH PAD-KS-0025(0.4mm)	50-023476-00	2	Attach MYLAR on two black buttons	Push the rubber into the proper position.	N/A

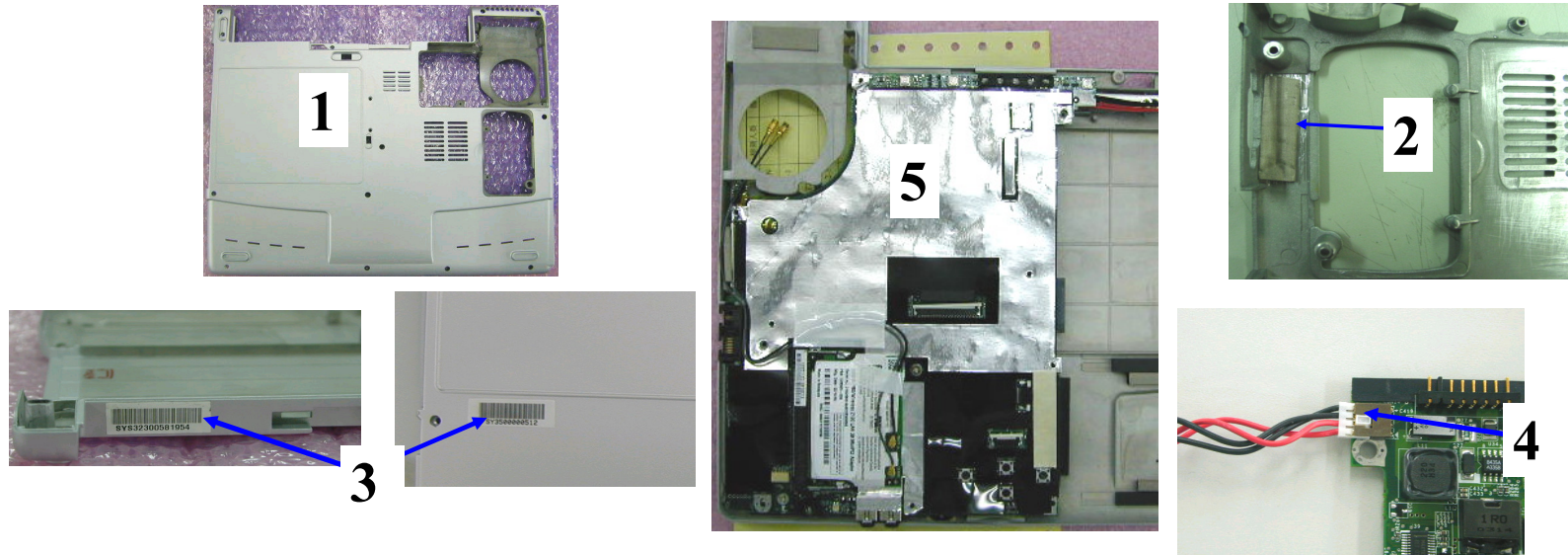
Name of S.O.P: efio!121i System Ass'y SOP	Working name: 7053	Revision: 0	Date: 2004.2.26	(Manufacturing Section): PE
--	--------------------	-------------	-----------------	-----------------------------

Explanation of illustrations



Difference	Operating item	Part name/specification	Part/number	Q'TY	Operation description	Important note	Jig/fixture
	1	MDC MODEM CARD-SMART LINK-MDC56S-I	76-060007-00	1	Check appearance to make sure there are no scratches.		NA
	2	E12T-MDC MODEM HARNESS	29-001734-00	1	Connect Modem HARNESS on MODEM port	NA	NA
	3	SCREW ISOT M2.0 X 3.0L	41-721520-03	2	Assemble MODEM card on M/B: Tighten two screws up in a.b. sequence as shown in the diagram.	N/A	Electrical screwdriver/Torque: 1.5±0.5Kgf-cm
	4	NA	NA	1	Apply glue as shown in the diagram.	Arrange wires at corner: Do not arrange inside red circle.	N/A
	5	Heat melt glue	NA	2	Connect modem wires on M/B; arrange modem wires as shown in the diagram.	N/A	N/A

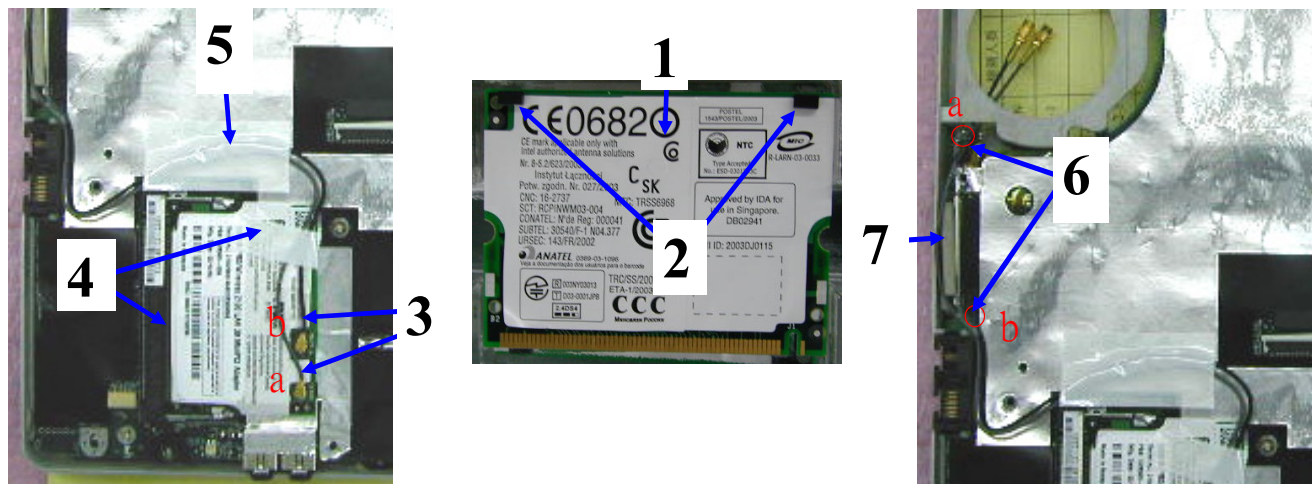
Name of S.O.P: efi0121i System Ass'y SOP	Working name: 7054	Revision: 0	Date: 2004.2.26	(Manufacturing Section): PE
--	--------------------	-------------	-----------------	-----------------------------



Difference	Operating item	Part name/specification	Part/number	Q'TY	Operation description	Important note	Jig/fixture
ID2 LCD	1	E12B-LOWER COVER-#8019-B1328A	40-002470-01	1	Take bottom cover and check appearance to make sure there are no scratches.	N/A	N/A
		E12B-LOWER COVER-#8750M	40-002470-10				
	2	CONDUCTIVE SPONGE (10X1X25mm)	51-350094-06	1	Attach at the bottom of the cover as shown in the diagram	Attach it following plow groove on bottom cover	N/A
	3	PRODUCT BAR CORD LABEL	63-000710-00	1	Attach PRODUCT BAR CODE LABEL as shown in the diagram	N/A	N/A
	4	E12T-POWER HARNESS	29-001735-00	1	Take a power harness. Insert it into M/B and DC-in card terminal as shown in the diagram.	Place red wires close to CD-ROM	N/A
	5	N/A	N/A	1	Place M/B in LOWER COVER	N/A	N/A

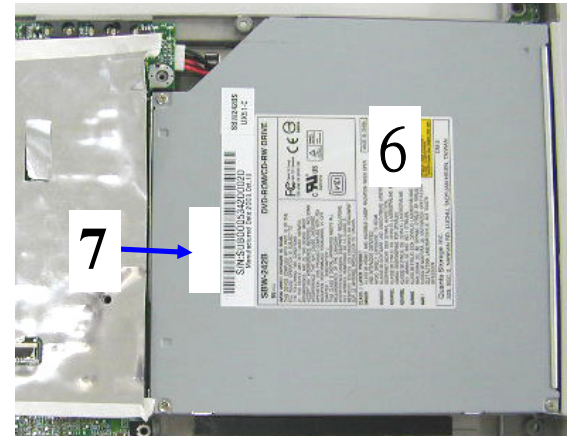
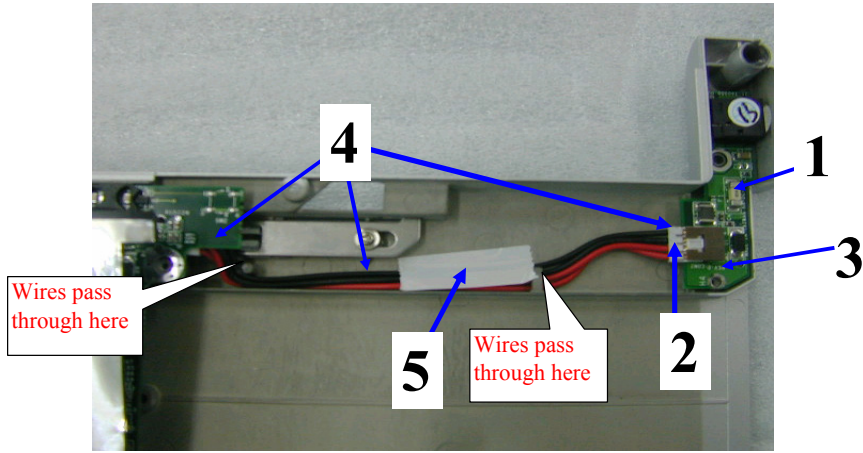
Name of S.O.P: efiol121i System Ass'y SOP	Working name: 7055	Revision: 0	Date: 2004.2.26	(Manufacturing Section): PE
---	--------------------	-------------	-----------------	-----------------------------

Explanation of illustrations



Difference	Operating item	Part name/specification	Part/number	QTY	Operation description	Important note	Jig/fixture
	1	WLAN MODULE MINIPCI-3.3V-TYPE 3B-IEEE 802.11b-I	76-070021-10	1	Connect WLAN module on M/B terminal. Attach a product bar cord label on M/B and wipe barcode.	N/A	BAR CODE machine
	2	P22T-RUBBER FOR WIRELESS	52-003091-00	2	Attach two pieces of rubber on the back side of the WLAN module at the left and right corners.	When attaching rubber, do not cover the edge of the card or press over card's components.	N/A
	3	PIFA ANTENNA-W/HARNESS-FOR GEMTEK-C3824B-E12T	22-600043-10	1	Take Antenna; connect it to WLAN module and fix with tape.	N/A	N/A
	4	Tape	61-080022-01	1	Insert WLAN module on M/B terminal as shown in the diagram; arrange antenna wires as shown in the diagram and fix with tape.	N/A	N/A
	5	Tape	61-080022-00	1	Arrange wires as shown in the diagram.	N/A	N/A
	6	Heat melt glue	N/A	2	Heat melt glue	N/A	N/A
	7	CONDUCTIVE SPONGE	51-350094-23	1	Attach conductive sponge to CRT PORT.	Attach around the CRT PORT's inner edge.	N/A

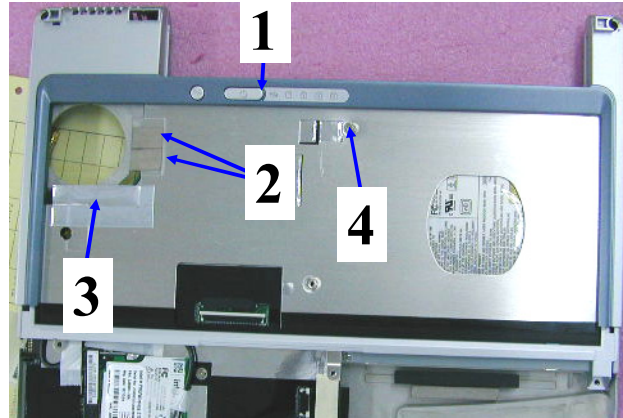
Name of S.O.P: efiol121i System Ass'y SOP	Working name: 7056	Revision: 0	Date: 2004.2.26	(Manufacturing Section): PE
---	--------------------	-------------	-----------------	-----------------------------



Difference	Operating item	Part name/specification	Part/number	Q'TY	Operation description	Important note	Jig/fixture
	1	E12T-PCB ASS'Y-KN-DC-IN-REV: D-W/MECHANICAL PART	80-878000-00D	1	Take a DC-in card; check appearance.	N/A	N/A
	2	N/A	N/A	N/A	Connect DC-wire to DC-card and assemble it on base as shown in the diagram.	N/A	N/A
	3	SCREW ISOT-M2X3L-SELF-LOCKING ϕ D3.5mm t=0.8mm-	41-721520-03	1	Fix the card with screws.	N/A	Electrical screwdriver: 1.5±0.1Kgf-cm
	4	N/A	N/A	1	Arrange wires as shown in the diagram.	N/A	N/A
	5	Tape (約2~3cm)	61-080022-00	1	Fix wires with tape as shown in the diagram	N/A	N/A
	6	E12T-#8019 KME DVD-RW KIT-E1097-190	77-641008-20	1	Take a assembled CD-ROM, insert CD-ROM on M/B terminal.	Push in completely	N/A
	7	PRODUCT BAR CORD LABEL	63-000710-00	1	Wipe CD-ROM bar code	N/A	bar code machine

Name of S.O.P: efio!121i System Ass'y SOP	Working name: 7057	Revision: 0	Date: 2004.2.26	(Manufacturing Section): PE
--	--------------------	-------------	-----------------	-----------------------------

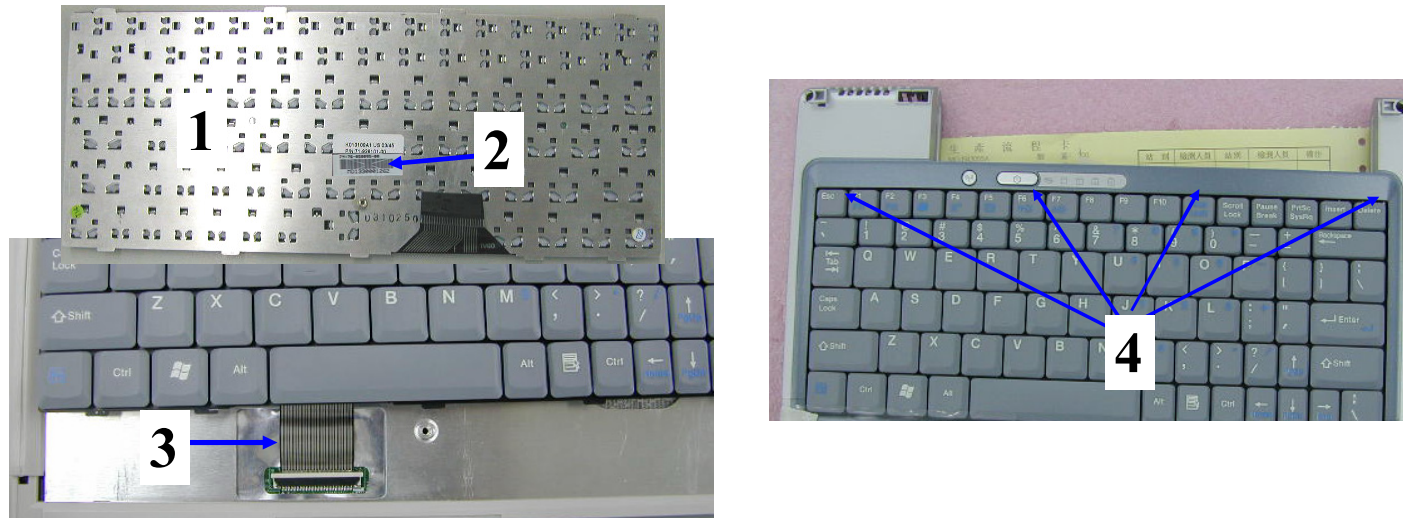
Explanation of illustrations



Difference	Operating item	Part name/specification	Part/number	Q'TY	Operation description	Important note	Jig/fixture
	1	E12B-UPPER COVER ASS'Y- #8019/#8131	50-964301-02	1	Take an upper cover; check appearance. Place upper cover on BASE	Before assembling upper cover, install antenna and sponge to their positions. UPPER COVER's RIB must clip into place	N/A
		E12B-UPPER COVER ASS'Y-#8148- E1098-120	50-964301-40				
E12B2		E12B-#8750/#8051 UPPER COVER ASS'Y	50-964301-80				
	2	CONDUCTIVE SPONGE (10X0.5X15mm)	51-350094-15	2	Attach conductive sponge on upper cover's left upper side as shown in the diagram.	N/A	N/A
	3	E12T AL FOIL FOR K/B BRACKET EMI E4811	40-008163-00	1	Attach aluminum foil as shown in the diagram.	N/A	N/A
	4	SCREW ISOP M2.0 X 6.0L	41-850520-06	1	Lock a screw on upper cover as shown in the diagram.	N/A	Electrical screwdriver: 1.5±0.1Kgf-cm

Name of S.O.P: efiol121i System Ass'y SOP	Working name: 7058	Revision: 0	Date: 2004.2.26	(Manufacturing Section): PE
---	--------------------	-------------	-----------------	-----------------------------

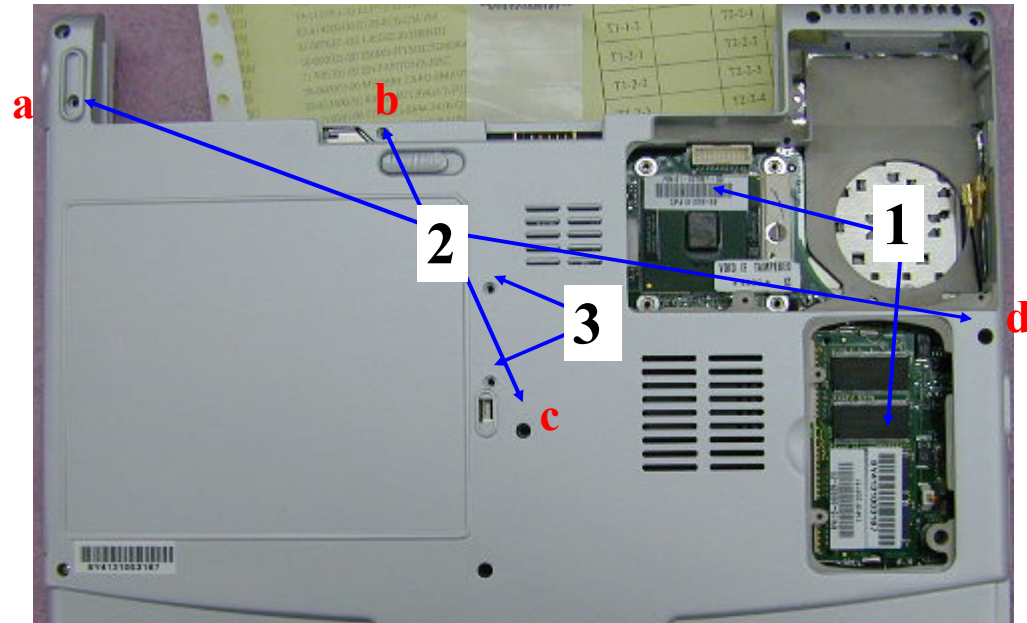
Explanation of illustrations



Difference	Operating item	Part name/specification	Part/number	Q'TY	Operation description	Important note	Jig/fixture
E12B2	1	K/B-83 KEY-EN-PANTONE 285C-W/NEW MICROSOFT LOGO	71-926101-00	1	Check the printing on keyboard to make sure symbols are not fuzzy or damaged; use cleaner to clean iron plate.	N/A	N/A
		K/B-83 KEY-EN-#41106-E12B-W/NEW MICROSOFT LOGO	71-926101-20				
	2	KEY PARTS LABEL	63-000710-00	1	Attach KEY PARTS LABEL on KB; wipe BARCODE	N/A	Bar code machine
	3	N/A	N/A	1	Connect KB's wires to M/B's CONN as shown in the diagram	Attach tightly	N/A
	4	N/A	N/A	4	Fix K/B on UPPER COVER as shown in the diagram.	Note: K/B's upper side must inserted into UPPER COVER's hook; check to make sure hook is not damaged. Make sure wires can not be seen from front side.	N/A

Name of S.O.P: efi0121i System Ass'y SOP	Working name: 7059	Revision: 0	Date: 2004.2.26	(Manufacturing Section): PE
--	--------------------	-------------	-----------------	-----------------------------

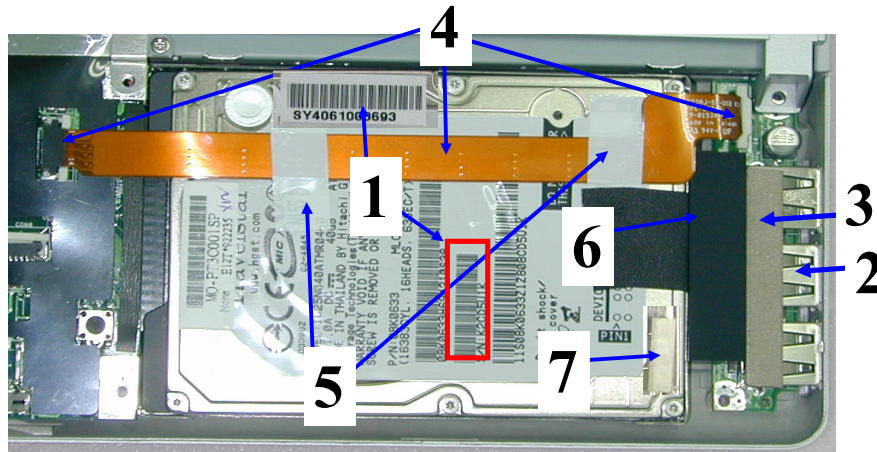
Explanation of illustrations



Difference	Operating item	Part name/specification	Part/number	Q'TY	Operation description	Important note	Jig/fixture
	1	NA	NA	1	Wipe CPU product label; wipe Barcode label	N/A	Bar code machine
	2	SCREW ISOP M2.0 X 6.0L	41-850520-06	4	Tighten 5 screws on LOWER COVER in a.b.c.d.e order as shown in the diagram.	N/A	Electrical screwdriver: 1.5±0.1Kgf-cm
	3	SCREW ISOT M2.0 X 3.0L	41-721520-03	2	Tighten 2 screws on bottom cover as shown in the diagram.	N/A	Electrical screwdriver: 1.5±0.1Kgf-cm

Name of S.O.P: efio!121i System Ass'y SOP	Working name: 7060	Revision: 0	Date: 2004.2.26	(Manufacturing Section): PE
---	--------------------	-------------	-----------------	-----------------------------

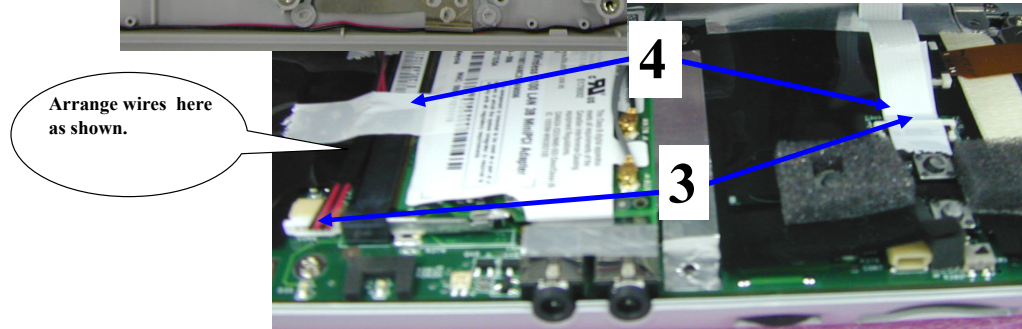
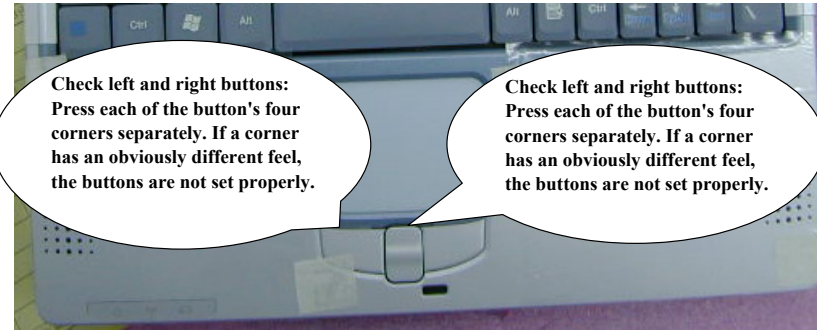
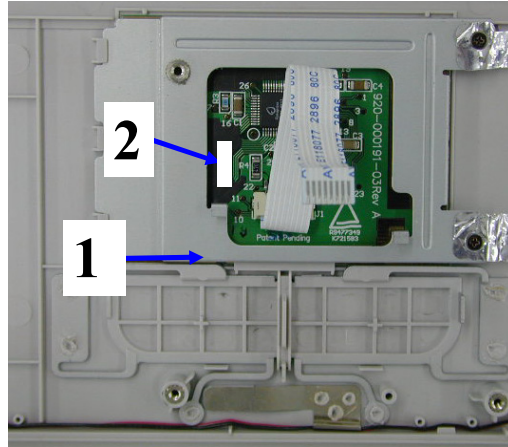
Explanation of illustrations



Difference	Operating item	Part name/specification	Part/number	QTY	Operation description	Important note	Jig/fixture
	1	N222S1-HDD KIT	77-606008-20	1	Install HDD into machine as shown in the diagram.	N/A	N/A
		PRODUCT BAR CORD LABEL	63-000710-00	1	Attach product barcode label on HDD; wipe HDD number.	N/A	bar code machine
	2	E12T-PCB ASS'Y-KN-USB-REV: A-W/MECHANICAL PARTS	80-878100-00A	1	Take a USB card and attach sponge to it.	N/A	N/A
	3	CONDUCTIVE SPONGE (7X1X45mm)	51-350094-21	1			N/A
	4	P22AJ-SB-USB FPC	29-015340-00	1	Connect one set of USB wires to USB card; connect the second set to the M/B. Fix USB card's in position on lower bottom cover as shown in the diagram.	N/A	N/A
	5	Tape (2~3cm)	61-080022-00	2	Use tape to fix USB wires on HDD as shown in the diagram.	Wires must be inserted in their correct positions	
	6	E12T-RUBBER FOR HDD-E4803	52-002121-00	1	Insert HDD RUBBER between HDD and USB as shown in the diagram.	N/A	N/A
	7	CONDUCTIVE SPONGE 5X3.5X15mm	51-350094-02	1	Attach conductive sponge on HDD as shown in the diagram.	N/A	N/A

Name of S.O.P: efiol121i System Ass'y SOP	Working name: 7061	Revision: 0	Date: 2004.2.26	(Manufacturing Section): PE
---	--------------------	-------------	-----------------	-----------------------------

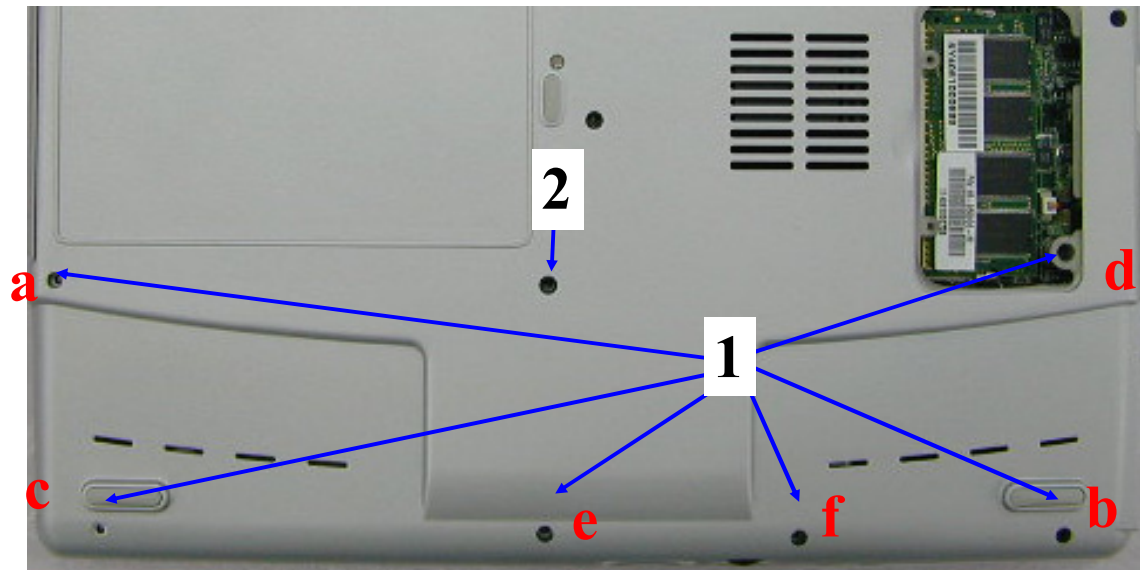
Explanation of illustrations



Difference	Operating item	Part name/specification	Part/number	QTY	Operation description	Important note	Jig/fixture
	1	E12B-#8019/#8131 PALM REST KIT	77-643009-00	1	Check appearance to make sure there are no scratches.	N/A	N/A
	2	Date mark	63-000042-XX	1	Attach date mark on palm rest panel's iron part as shown in the diagram.	N/A	N/A
	3	N/A	N/A	2	Connect PALM REST's TOUCHPAD wires and SPEAKER wires on M/B's terminal as shown in the diagram.	Insert FFC: If there is rugged edge on LOWER COVER hook, tidy it up before assembling.	N/A
	4	Tape (around 3~4cm)	61-080022-00	2	Arrange SPEAKER wires and fix them with tape as shown in the diagram; install PALM REST into BASE	Note CAP wire arrangement: Arrange wires as shown in the diagram.	N/A

Name of S.O.P: efiol121i System Ass'y SOP	Working name: 7062	Revision: 0	Date: 2004.2.26	(Manufacturing Section): PE
---	--------------------	-------------	-----------------	-----------------------------

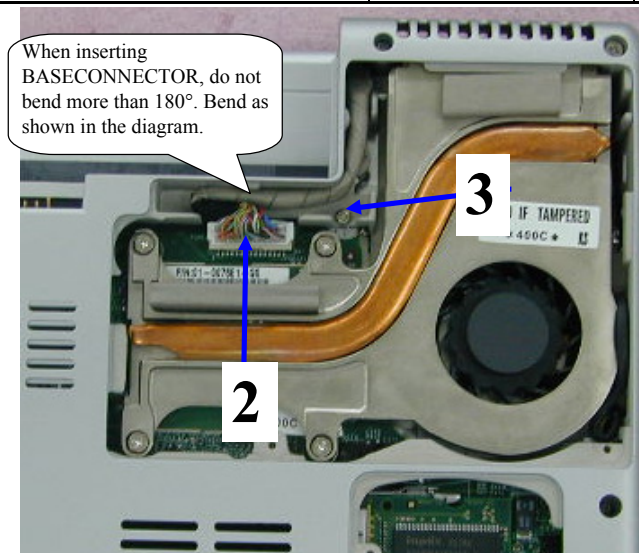
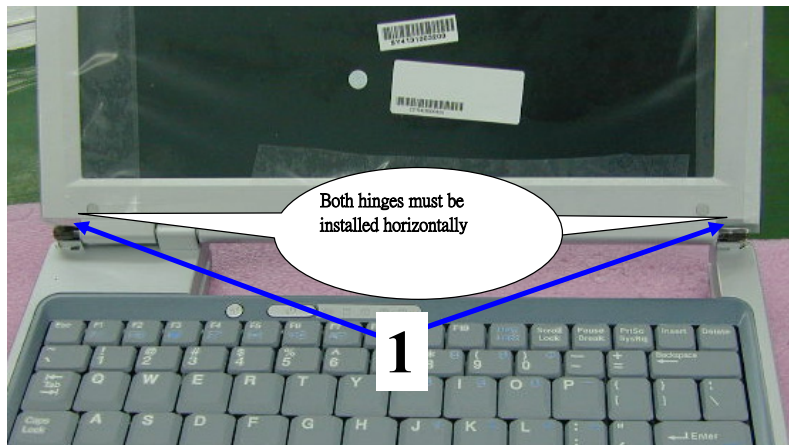
Explanation of illustrations



Difference	Operating item	Part name/specification	Part/number	Q'TY	Operation description	Important note	Jig/fixture
	1	SCREW ISOT M2.6 X 5.0L	41-850520-06	6	Lock screws in a.b.c.d.e.f. order	N/A	Electrical screwdriver: 1.5±0.1Kgf-cm
	2	SCREW ISOP-M2X7L-BLACK-NI + SELF LOCKING	41-850020-07	1	Lock a screw on LOWER COVER.	N/A	Electrical screwdriver: 1.5±0.1Kgf-cm

Name of S.O.P: efio!121i System Ass'y SOP	Working name: 7063	Revision: 0	Date: 2004.2.26	(Manufacturing Section): PE
--	--------------------	-------------	-----------------	-----------------------------

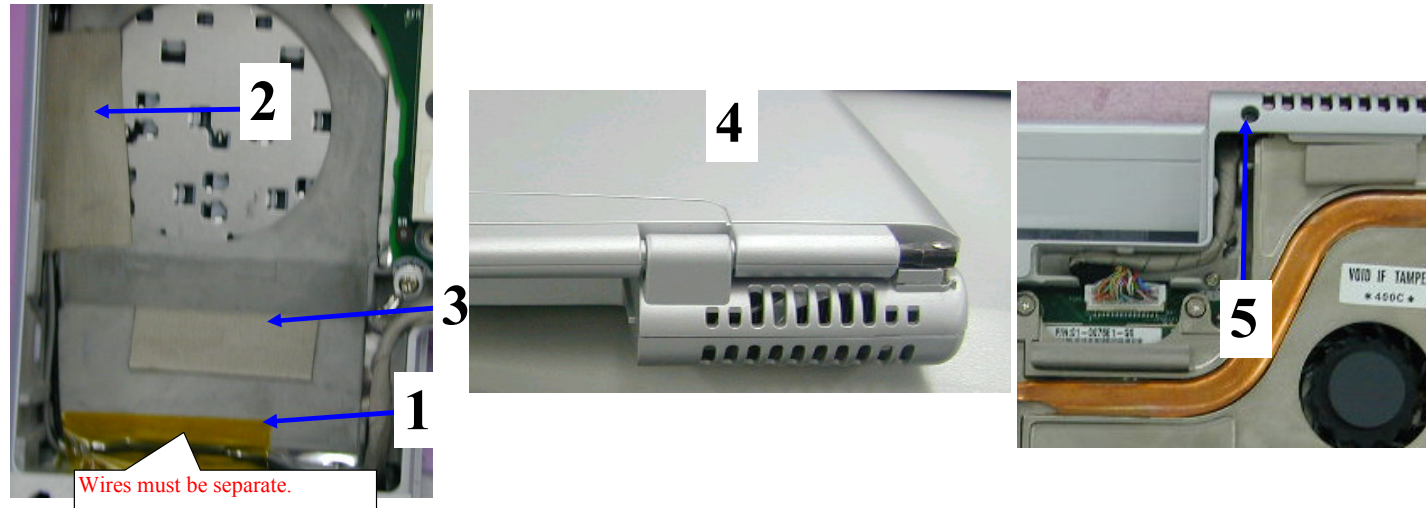
Explanation of illustrations



Difference	Operating item	Part name/specification	Part/number	Q'TY	Operation description	Important note	Jig/fixture
	1	#8019 DISPLAY ASS'Y-12.1" XGA TFT HYUNDAI-E12B	86-643905-00	1	Take LCD. Wipe BARCODE and install LCD MODULE on BASE MODULE	Do not damage upper cover when assembling. When installing LCD, make sure hinges are both installed at the same angle	Bar code machine
	2	N/A	N/A	1	Arrange wires: Place LCD's wires under bottom dent and connect LCD wires to M/B.	Arrange wires as shown in the diagram.	Chopstick
	3	SCREW ISOP M2.0 X 6.0L	41-850520-06	1	Lock a screw on LOWER COVER as shown in the diagram.	N/A	Electrical screwdriver: 1.5±0.1Kgf-cm

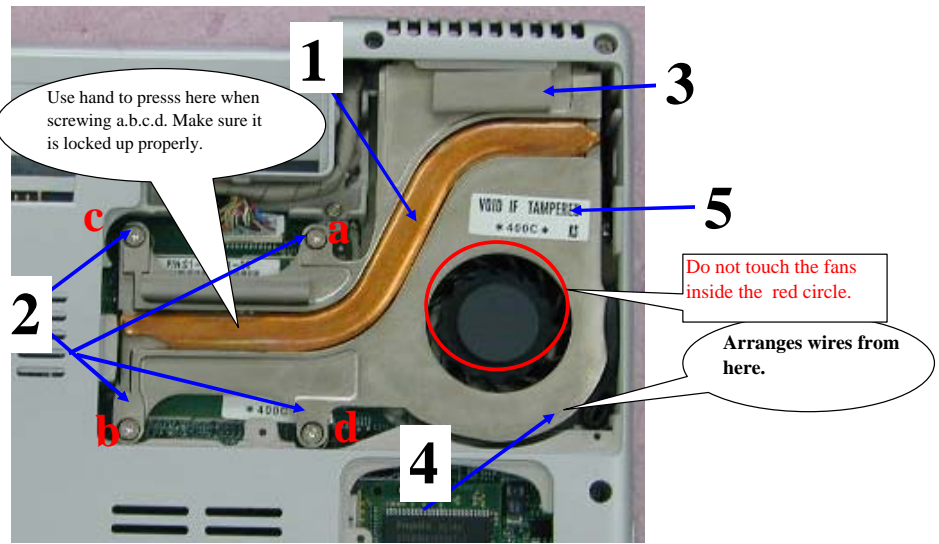
Name of S.O.P: efiol121i System Ass'y SOP	Working name: 7064	Revision: 0	Date: 2004.2.26	(Manufacturing Section): PE
---	--------------------	-------------	-----------------	-----------------------------

Explanation of illustrations

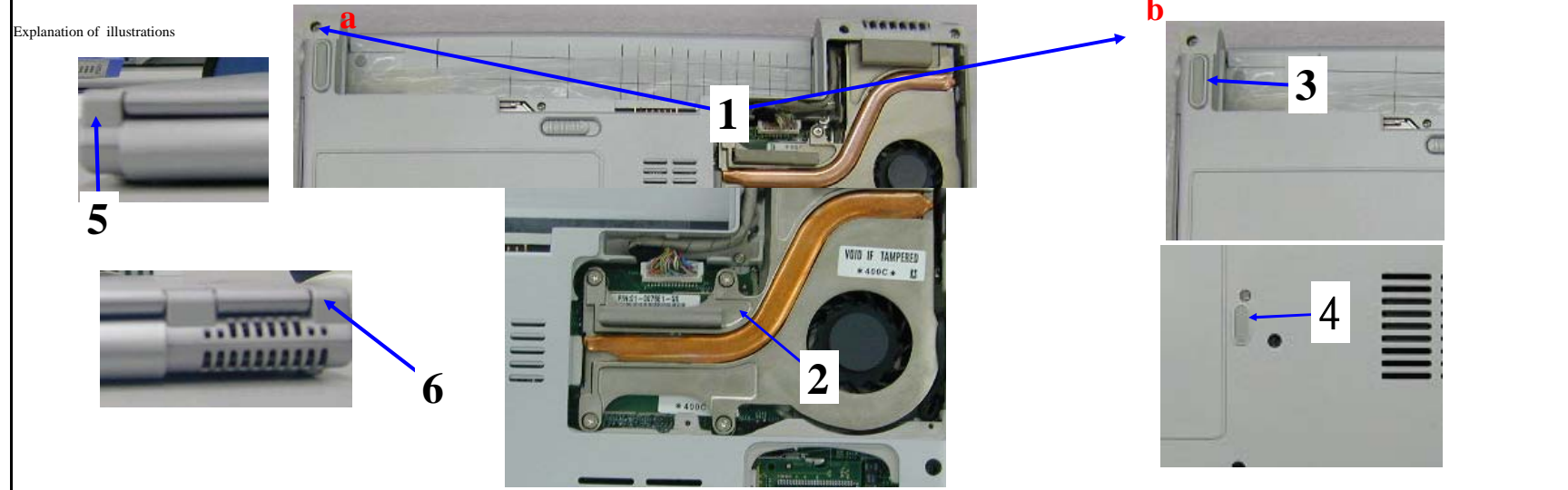


Difference	Operating item	Part name/specification	Part/number	Q'TY	Operation description	Important note	Jig/fixture
	1	Tape	N/A	1	Connect antenna wires arranged as shown in the diagram. Attach with tape.	Wires must be properly arranged in their places.	N/A
	2	E12B-ELECTRICALLY CONDUCTIVE FABRIC TAPE-35X15mm	51-035041-00	1	Attach conductive fabric as shown in the diagram.	N/A	N/A
	3	CONDUCTIVE SPONGE (10X0.5X30mm)	51-350094-15	1	Attach a conductive sponge on lower bottom cover upper-right corner as shown in the diagram.	N/A	N/A
	4	E12T-HARNESS COVER-#8131-E4681	50-035192-00	1	Install HARNESS COVER as shown in the diagram.	Do not press over antenna	N/A
E12B2		E12B-HARNESS COVER-#8750	50-035192-20				
	5	SCREW ISOT M2.6 X 5.0L	41-820520-06	1	Lock screw on harness cover as shown in the diagram.	N/A	Electrical screwdriver: 1.5±0.1Kgf-cm

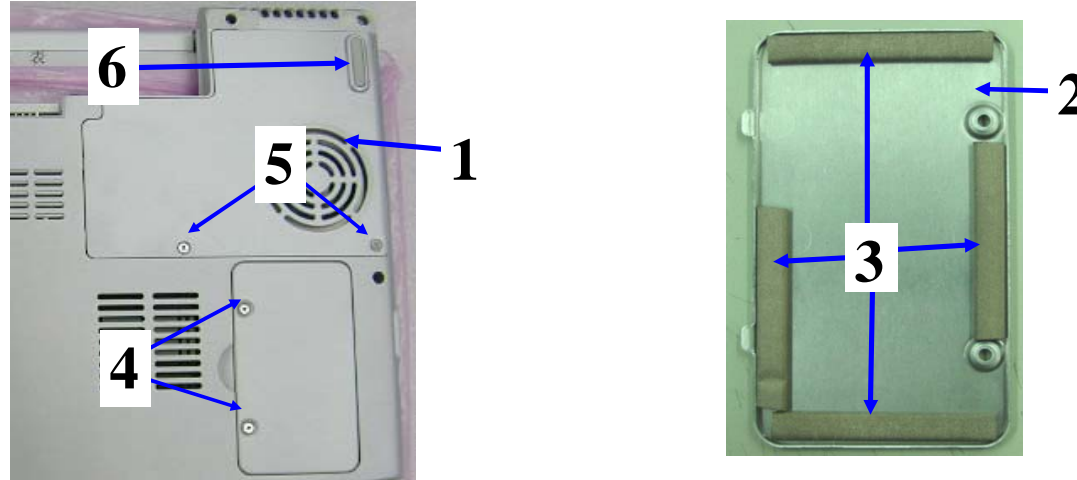
Name of S.O.P: efiol121i System Ass'y SOP	Working name: 7065	Revision: 0	Date: 2004.2.26	(Manufacturing Section): PE
---	--------------------	-------------	-----------------	-----------------------------



Difference	Operating item	Part name/specification	Part/number	QTY	Operation description	Important note	Jig/fixture
	1	E12B-HEATSINK MODULE-W/FAN-W/THERMAL PAD-SCREW	40-003553-02	1	Take HEAT SINK MODULE and connect wires on M/B. Fix in place it with 4 spring screws in a.b.c.d order; arrange wires as shown in the diagram.	Arrange wires beside fan; make sure fan does not press on wires as shown in the diagram.	N/A
	2	N/A	N/A	4			Electrical screwdriver: 1.5±0.1Kgf-cm
This is only apply to the base w/ shield	3	CONDUCTIVE SPONGE 9X3.5X25mm	51-350094-05	1			N/A
This is only apply to the base w/ shield		CONDUCTIVE SPONGE (10x6.5x25mm)	51-350094-14				N/A
	4	N/A	N/A	1			Arrange wires beside fans
	5	E12T-VOID LABEL FOR TRIGEM-KL1890	63-001584-10	1	Attach VOID LABEL as shown in the diagram.	N/A	N/A

Name of S.O.P: efo!121i System Ass'y SOP		Working name: 7066		Revision: 0		Date: 2004.2.26		(Manufacturing Section): PE	
<p>Explanation of illustrations</p> 									
Difference	Operating item	Part name/specification	Part/number	QTY	Operation description	Important note	Jig/fixture		
	1	SCREW ISOT M2.6 X 5.0L	41-721526-05	2	Lock HINGE SCREWS on base cover in a.b. order as shown in the diagram.	Lock screws very tightly.	Electrical screwdriver: 2.5±0.1Kgf-cm		
	2	CONDUCTIVE SPONGE 5X5.5X35mm	51-350094-03	1	Attach conductive sponge as shown in the diagram.	N/A	N/A		
	3	P22AJ-RUBBER FOOT-PANTONE 428C	52-000000-20	1	Attach rubber foot pad as shown in the diagram.	Push in completely	N/A		
E12B2		N222S1-RUBBER FOOT	52-000000-00						
	4	P22AJ-LOWER CD-ROM RUBBER-PANTONE 428C	52-002022-20	1	Attach rubber foot pad as shown in the diagram.	Push in completely	N/A		
E12B2		N222S1-LOWER CD-ROM RUBBER	52-002022-00						
	5	E12T-HINGE COVER-R-#8019-E4680A	50-035191-00	1	Install HINGE COVER as shown in the diagram.	N/A	N/A		
E12B2		E12B-HINGE COVER-R-#8750	50-035191-20						
E12B2	6	E12B-HINGE COVER-L-#8750	50-035190-20	1	Install HINGE COVER as shown in the diagram.	N/A	N/A		
		E12T-HINGE COVER-L-#8019-E4679A	50-035190-00						

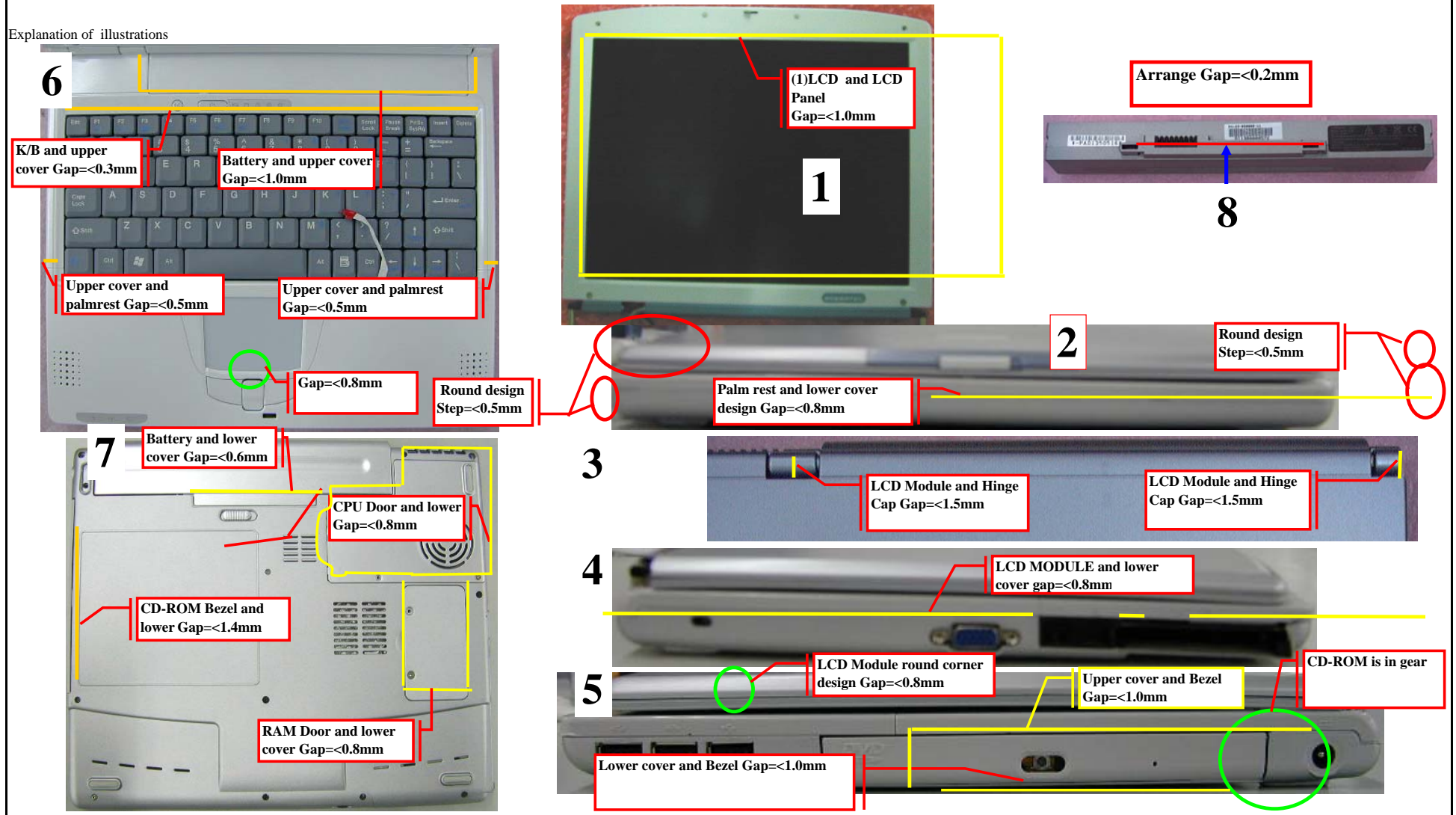
Name of S.O.P: efio!12i System Ass'y SOP	Working name: 7067	Revision: 0	Date: 2004.2.26	(Manufacturing Section): PE
--	--------------------	-------------	-----------------	-----------------------------



Difference	Operating item	Part name/specification	Part/number	Q'TY	Operation description	Important note	Jig/fixture
E12B2	1	E12T-#8019 CPU DOOR ASS'Y	50-964101-01	1	Install CPU DOOR into BASE MODULE as shown in the diagram	Make sure the CPU DOOR is completely lodged in.	N/A
		E12B-#8750 CPU DOOR ASS'Y	50-964301-70				
	2	E12T-RAM DOOR-#8019	40-011662-00	1	Install RAM DOOR	N/A	N/A
		E12B-RAM DOOR-#8750M	40-011662-20			E12B2	
	3	CONDUCTIVE SPONGE (5X2X30mm)	51-350094-01	4	Attach 4 conductive sponges on RAM door as shown in the diagram.	N/A	N/A
	4	SCREW ISOT-M2X3L-SELF-LOCKING ϕ D3.5mm t=0.8mm	41-721520-03	2	Lock two screws on RAM door as shown in the diagram.	N/A	Electrical screwdriver: 1.0±0.1Kgf-cm
	5	SCREW ISOT-M2X3L-SELF-LOCKING ϕ D3.5mm t=0.8mm	41-721520-03	2	Lock two screws on RAM door as shown in the diagram.	N/A	Electrical screwdriver: 1.0±0.1Kgf-cm
E12B2	6	P22AJ-RUBBER FOOT-PANTONE 428C	52-000000-20	1	Attach rubber foot pad as shown in the diagram.	Push in completely	N/A
		N222S1-RUBBER FOOT	52-000000-00				

Name of S.O.P: efio! 121i Final Ass'y S.O.P	Working name: Exterior checking	Revision: 0	Date: 2004.3.3	(Manufacturing Section): PE
---	---------------------------------	-------------	----------------	-----------------------------

Explanation of illustrations





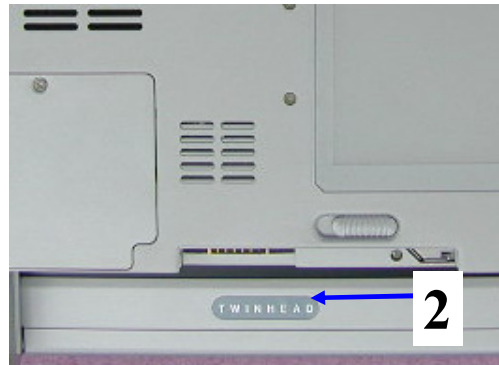
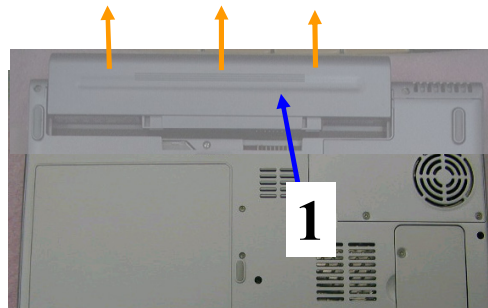
Twinhead International Corp.

efio! 121i (Complete set) Instruction Manual		DOCUMENT CODE: TESOP401	
		REVISION: 0	
		RELEASE DATE:	
		PAGES: 8	
DESCRIPTION	PREPARED BY	CONCURRED BY	APPROVED BY
1. NEW RELEASE			

(Twinhead S.O.P) (Document NO): TESOP401

Name of S.O.P: efio! 121i Complete Set Ass'y SOP	Working name: 9101-2	Revision: 0	Date: 2004.03.03	(Manufacturing Section): PE
--	----------------------	-------------	------------------	-----------------------------

Explanation of illustrations



Difference	Operating item	Part name/specification	Part/number	Q'TY	Operation description	Important note	Jig/fixture
According to BOM	1	BAT-LIION-3S2P-2200mAh-#8019-PS-SAMSUNG CELL	23-050180-10	1	Take off battery horizontally.	Take off battery horizontally.	N/A
		BAT-LIION-3S2P-2200mAh-#8148-PS-SAMSUNG CELL	23-050180-20				
	2	N22X-LCD PANEL NAME PLATE-PC-#8131	50-050160-30	1	Attach name plate on LCD PANEL fillister as shown in the illustration	Attach solidly	N/A
	3	D212A-LCD FRONT PLATE-ID3-FOR TWINHEAD	40-006122-00	1	Attach name plate on LCD COVER fillister as shown in the illustration	N/A	N/A



Twinhead International Corp.

(Twinhead S.O.P) (Document NO): TESOP401

Name of S.O.P: efio! 121i Complete set Ass'y SOP	Working name: 9101-3	Revision: 0	Date: 2004.03.03	(Manufacturing Section): PE
--	----------------------	-------------	------------------	-----------------------------

Explanation of illustrations



Difference	Operating item	Part name/specification	Part/number	QTY	Operation description	Important note	Jig/fixture
	1	E12B-MODEL NAME EFIO 121i LABEL	63-040102-Y0	1	Attach MODEL NAME LABEL as shown in the illustration	Attach solidly	N/A
	2	E12B-FCC RATING LABEL-EN-C3838-FOR GENERIC	63-040119-70	1	Attach FCC RATING LABEL as shown in the illustration	Attach solidly	N/A
According to BOM	3	E12B-LABEL FOR 2004 TAIWANESE MARKET	63-000823-G0	1	Attach Label as shown in the illustration.	Attach solidly	N/A

Name of S.O.P: efiol 121i Complete set Ass'y SOP	Working name : Exterior checking	Revision: 0	Date : 2004.3.3	(Manufacturing Section): PE
--	----------------------------------	-------------	-----------------	-----------------------------

Explanation of illustrations

6 K/B and upper cover Gap=<0.3mm
 Battery and upper cover Gap=<1.0mm
 Upper cover and palmrest Gap=<0.5mm
 Upper cover and palmrest Gap=<0.5mm
 Gap=<0.8mm
 Round design Step=<0.5mm

1 (1) LCD and LCD Panel Gap=<1.0mm

2 Round design Step=<0.5mm
 Palm rest and lower cover design Gap=<0.8mm

3 LCD Module and Hinge Cap Gap=<1.5mm
 LCD Module and Hinge Cap Gap=<1.5mm

4 LCD MODULE and lower cover Gap=<0.8mm

5 LCD Module round corner design Gap=<0.8mm
 Upper cover and Bezel Gap=<1.0mm
 Lower cover and Bezel Gap=<1.0mm
 Function of CD-ROM must be in gear

7 Battery and lower cover Gap=<0.6mm
 CPU Door and lower Gap=<0.8mm
 CD-ROM Bezel and lower Gap=<1.4mm
 RAM Door and lower cover Gap=<0.8mm

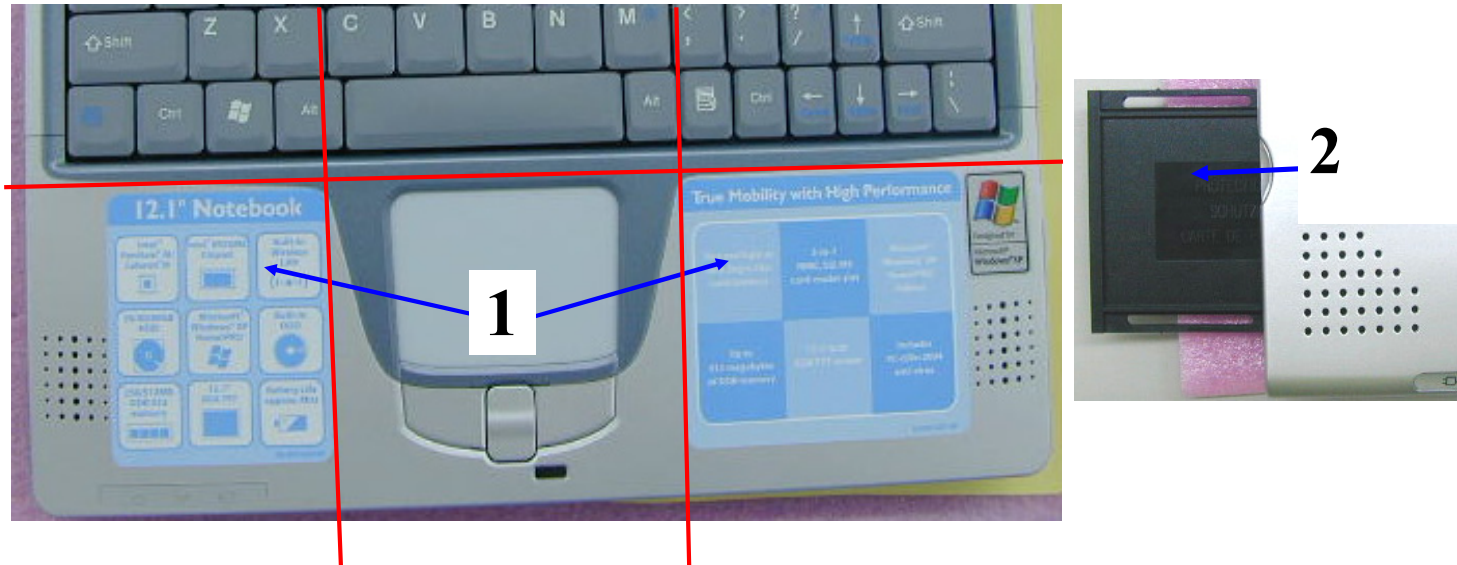
8 Arrange Gap=<0.2mm



Twinhead International Corp.

(Twinhead S.O.P) (Document NO): TESOP401

Name of S.O.P: efiol 121i Complete set Ass'y SOP | Working name: 9101-4 | Revision: 0 | Date: 2004.03.03 | (Manufacturing Section): PE



Difference	Operating item	Part name/specification	Part/number	Q'TY	Operation description	Important note	Jig/fixture
	1	E12B-POP LABEL LEFT-EN-FOR 12" CENTRINO	63-001250-00	1	Attach label as shown in the illustration	N/A	N/A
		E12B-POP LABEL RIGHT-EN-FOR 12" CENTRINO	63-001251-00	1			
	2	N222S1-DUMMY CARD	50-020355-00	1	Insert dummy card into machine	N/A	N/A

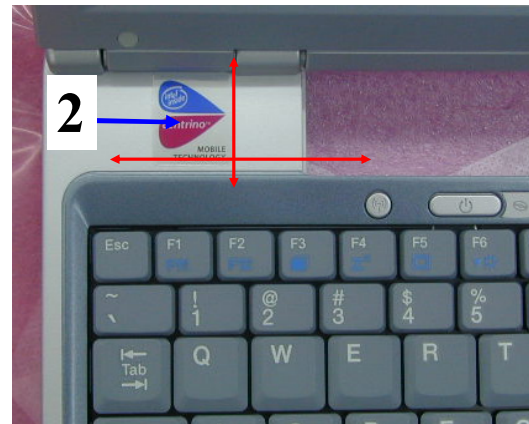
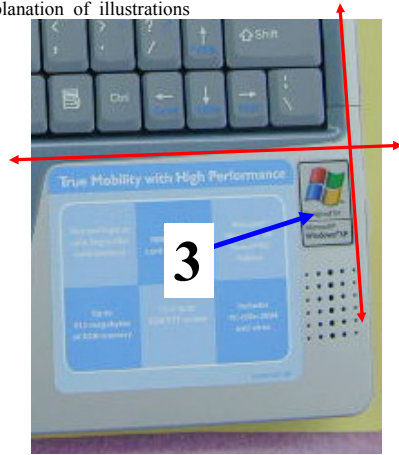


Twinhead International Corp.

(Twinhead S.O.P) (Document NO): TESOP401

Name of S.O.P: efio! 121i Complete set Ass'y SOP	Working name: 9101-5	Revision: 0	Date: 2004.03.03	(Manufacturing Section): PE
--	----------------------	-------------	------------------	-----------------------------

Explanation of illustrations

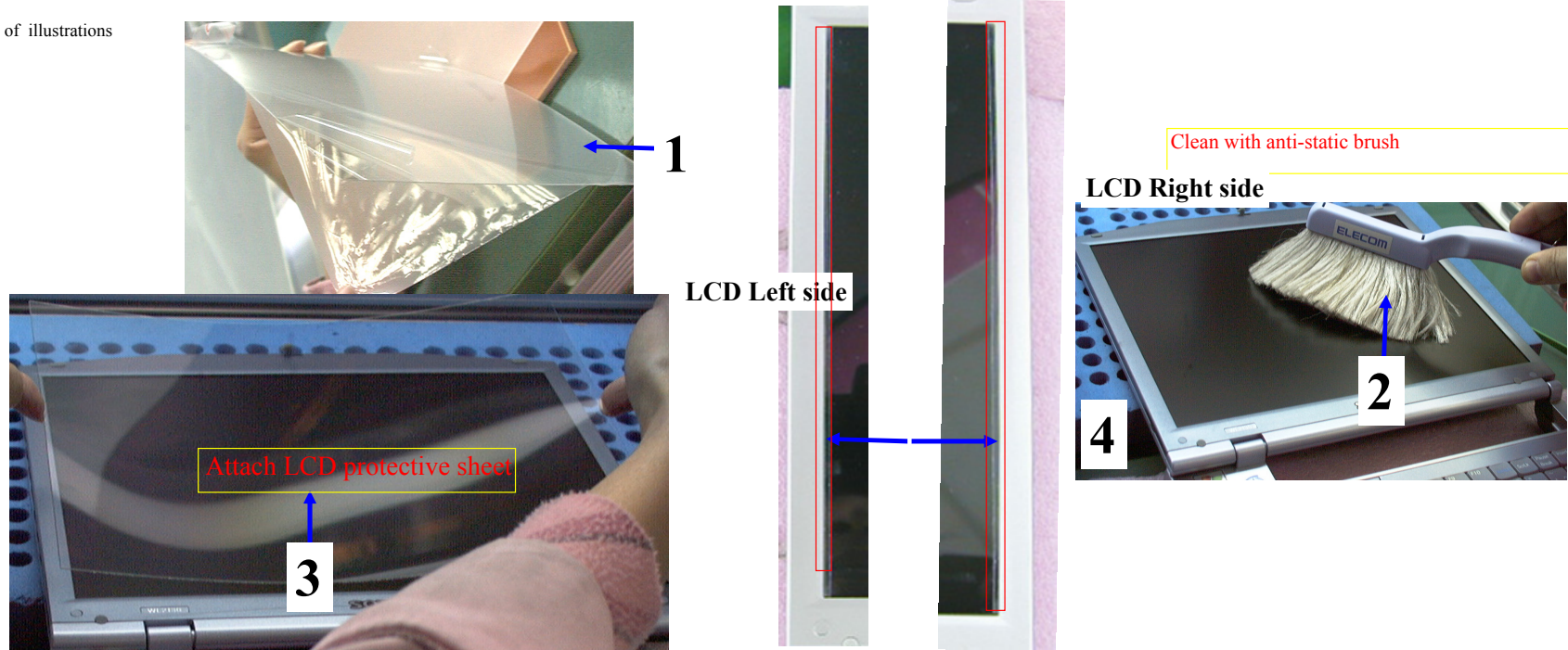


Difference	Operating item	Part name/specification	Part/number	QTY	Operation description	Important note	Jig/fixture
	1	E12B-LCD COVER PROTECT SHEET-MYLAR-KS-0013	50-023474-00	1	Attach LCD COVER protective sheet to LCD COVER	N/A	N/A
According to BOM	2	INTEL INSIDE STICKER-"CENTRINO"-FOR NOTEBOOK	63-001791-00	1	Attach as shown in the illustration	Attach solidly	N/A
		INTEL INSIDE STICKER-FOR CELERON	63-000537-20				
	3	ALL MODEL-LOGO STICKER ON N/B FOR WIN XP	63-000538-30	1	Attach as shown in the illustration	Attach solidly	N/A

(Twinhead S.O.P) (Document NO): TESOP401

Name of S.O.P: efio!121i Final Ass'y S.O.P	Working name: 9101-6	Revision: 0	Date: 2004.03.03	(Manufacturing Section) : PE
--	----------------------	-------------	------------------	------------------------------

Explanation of illustrations



Difference	Operating item	Part name/specification	Part/number	Q'TY	Operation description	Important note	Jig/fixture
	1	P22AJ-LCD PROTECTIVE PLATE-W/O CODING	50-000203-20	1	Tear off plastic paper on protective spacer	Do not touch the surface of the protective spacer	N/A
	2	N/A	N/A	N/A	Use anti-static brush to remove dirt	Brush GENTLY; do not damage the LCD screen	N/A
	3	N/A	N/A	1	Place LCD protective spacer on LCD screen	Center protective spacer; Make sure no dust is on spacer	N/A
	4	P22AJ-CLEAR LABEL	63-001083-00	2	Attach paster at four corners to stabilize protective spacer	Do not directly touch protective spacer .	N/A

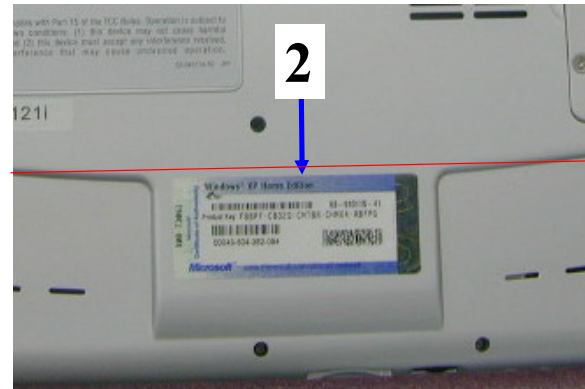
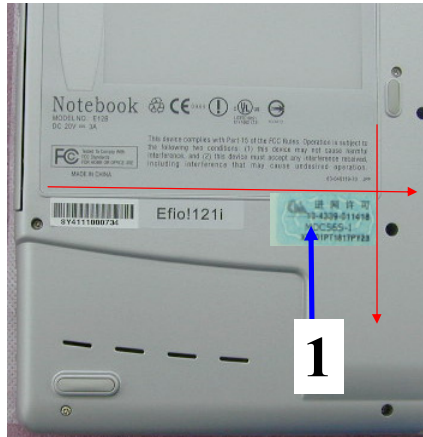


Twinhead International Corp.

(Twinhead S.O.P) (Document NO): TESOP401

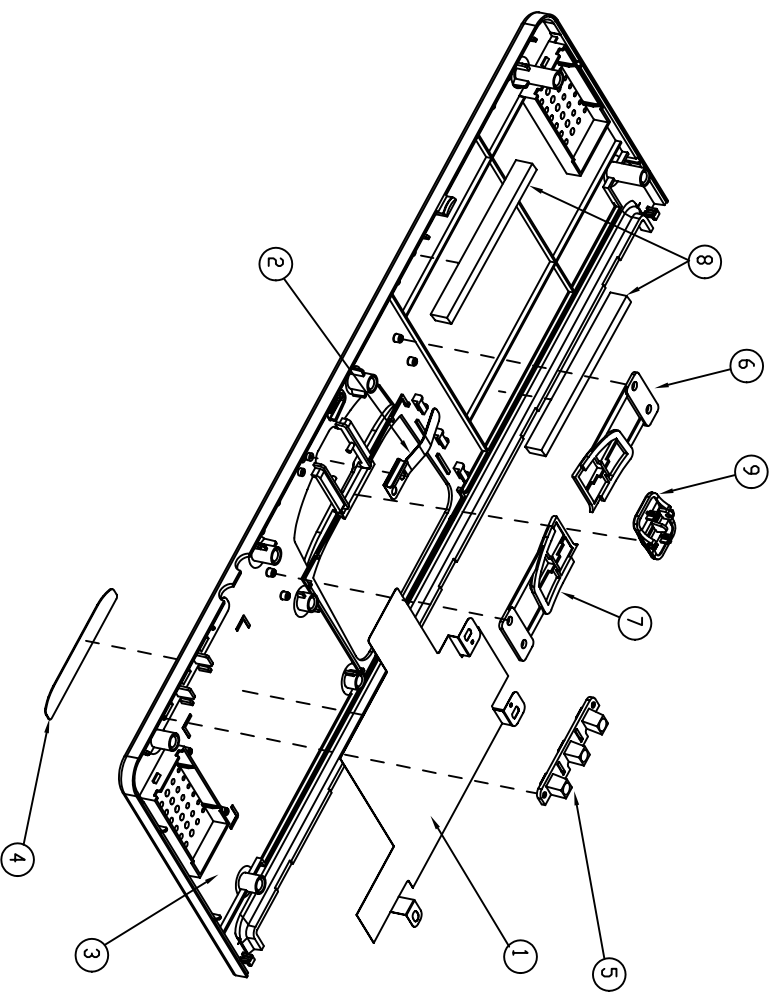
Name of S.O.P: efio!121i Complete set Ass'y SOF	Working name: 9101-7	Revision: 0	Date: 2004.03.03	(Manufacturing Section): PE
---	----------------------	-------------	------------------	-----------------------------

Explanation of illustrations



Difference	Operating item	Part name/specification	Part/number	Q'TY	Operation description	Important note	Jig/fixture
	1	E12B-MMI LABEL FOR BILLINTON MODEM-MDC56S-1	63-001252-00	1	Attach MMI LABEL as shown in the illustration	Part number according to BOM	N/A
Part number according to BOM	2	MICROSOFT COA STICKER-FOR WIN XP HOME EDITION	63-910115-41	1	Attach COA LABEL as shown in the illustration; make certain COA serial number is visible	Do not cross over red line when attaching the label	BARCODE machine
		MICROSOFT COA STICKER-FOR WIN XP PRO EFIO-NEW	63-910115-53				
		MICROSOFT COA STICKER-FOR WIN XP PROFESSION/AL	63-910115-51				

TOLERANCE UNLESS OTHERWISE SPEC.			
	Metal	Plastic	PCB
0--20	±0.10	±0.10	±0.10
20--99	±0.15	±0.15	±0.15
100--199	±0.20	±0.25	±0.20
200-----	±0.25	±0.30	±0.25



SCALE 0.6000

ITEM	P/N	DESCRIPTION	QTY	DRAW NO.
9	50-040233-20	E12B-SCROLL BOTTOM-#8019	1	C3715
8	51-036040-00	M222SI HDD SPINCE-6X3X5mm	2	D4687
7	50-000340-00	E12B-TOUCHPAD KNOB L F/R TH-#8019	1	E4779
6	50-000341-00	E12B-TOUCHPAD KNOB R F/R TH-#8019	1	E4780
5	50-025171-00	E12T-LENS FOR PALMREST POWER	1	E4687
4	50-000343-00	E12B-POWER LENS PLATE	1	E4805
3	50-000342-01	E12B-PALMREST FOR TH-#8019/#8131	1	B1327
2	40-011660-00	E12T-PALMREST SPRING SHEET	1	E4690
1	40-008162-00	E12T-AL FOIL FOR PALMREST	1	C3804
△				
ITEM	P/N	DESCRIPTION	QTY	DRAW NO.
BDM	66-643010-11	E12B-#8019/#8131 PALM REST ASS'Y		
△	50-964301-11	E12B-PALM REST ASS'Y-#8019/#8131		

ITEM	P/N	DESCRIPTION	QTY	DRAW NO.
9	50-040233-20	E12B-SCROLL BOTTOM-#8019	1	C3715
8	51-036040-00	M222SI HDD SPINCE-6X3X5mm	2	D4687
7	50-000340-00	E12B-TOUCHPAD KNOB L F/R TH-#8019	1	E4779
6	50-000341-00	E12B-TOUCHPAD KNOB R F/R TH-#8019	1	E4780
5	50-025171-00	E12T-LENS FOR PALMREST POWER	1	E4687
4	50-000343-00	E12B-POWER LENS PLATE	1	E4805
3	50-000342-00	E12B-PALMREST FOR TH-#8019/#8131	1	B1327
2	40-011660-00	E12T-PALMREST SPRING SHEET	1	E4690
1	40-008162-00	E12T-AL FOIL FOR PALMREST	1	C3804
△				
ITEM	P/N	DESCRIPTION	QTY	DRAW NO.
BDM	66-643010-10	E12B-#8019/#8131 PALM REST ASS'Y		
△	50-964301-10	E12B-PALM REST ASS'Y-#8019/#8131		

REV.	DATE	DESCRIPTION	CHANGE BY	APPROVAL BY	REMARKS
A	02/16/04	111, J11	ARVIN	FT YANG	
0	02/16/04	NEW		FT YANG	

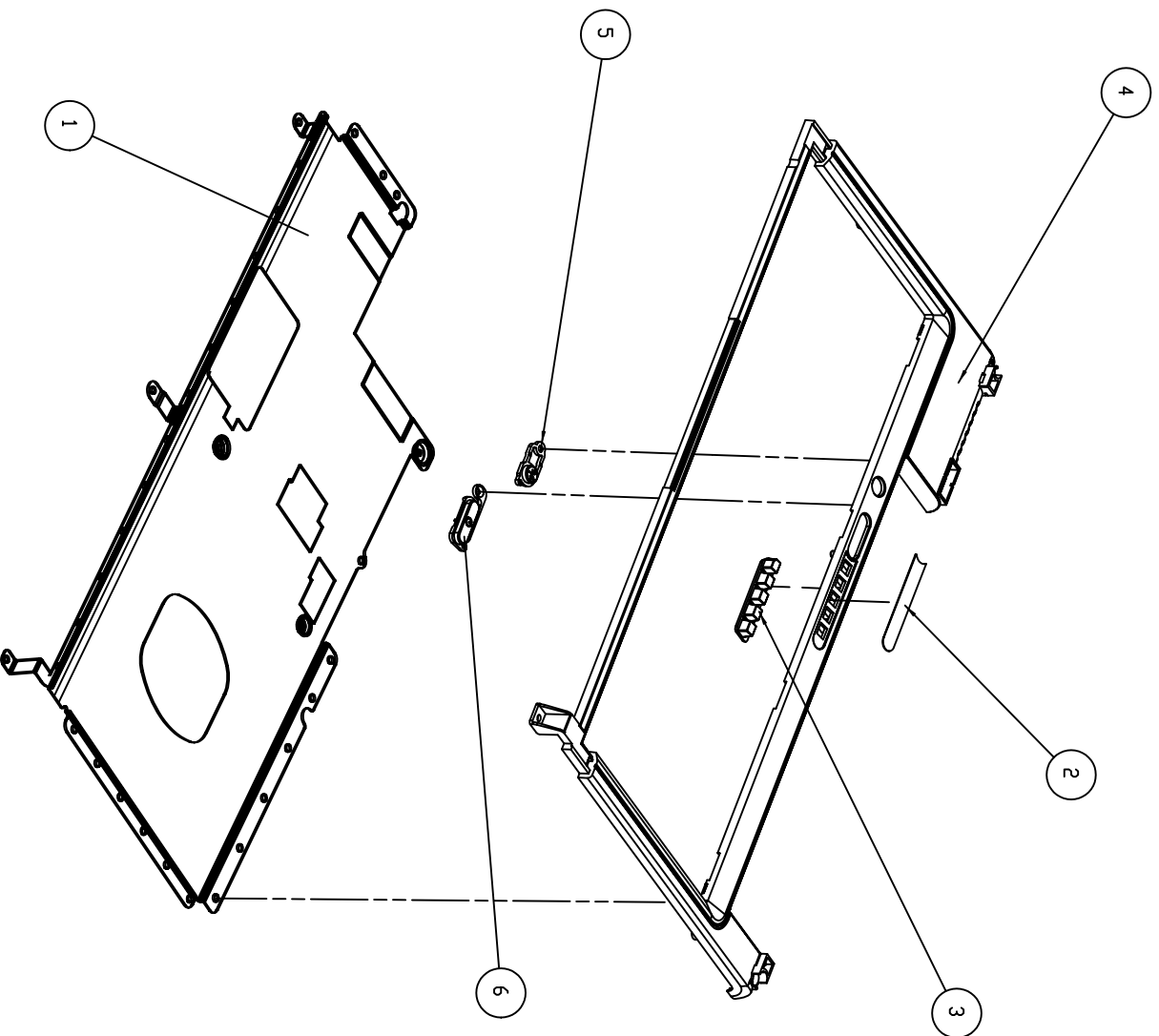
TDC040224-06	MDI S/N
--------------	---------

MAT'L	QTY	1	UNITS	MM	SHEET	1 of 1
FINISH	SCALE					
DRAW	ARVIN	02/16/04	PRODUCT NAME: E12B			
DSGN	ARVIN	02/16/04	DRAWING NAME: PALM REST ASS'Y			
CHECK	CC WANG	02/19/04				
APPR	FT YANG	02/23/04				

FILE NO.	E1098-04
PART NO.	50-964301-XX

Twinhead

TOLERANCE UNLESS OTHERWISE SPEC.			
	Metal	Plastic	PCB
0--20	+0.10	+0.10	+0.10
20--99	+0.15	+0.15	+0.15
100--199	+0.20	+0.25	+0.20
200-----	+0.25	+0.30	+0.25



ITEM	P/N	DESCRIPTION	QTY	DRAW N.D.
6	50-040271-00	E12T-POWER BUTTON-#8801	1	E4683
5	50-040270-00	E12T-WLAN BUTTON	1	E4682
4	50-031230-10	E12T-UPPER COVER-#8019/#8131	1	B1305
3	50-025170-00	E12T-INDICATOR LENS	1	E4684
2	50-000314-00	E12T-INDICATOR LENS PLATE	1	E4772
1	40-030883-02	E12T-K/B BRACKET	1	B1307
P/N		DESCRIPTION	QTY	DRAW N.D.
66-643010-01	E12B #8019/#8131	UPPER COVER ASSY		
50-964301-01	E12B #8019/#8131	UPPER COVER ASSY		

ITEM	P/N	DESCRIPTION	QTY	DRAW N.D.
6	50-040271-00	E12T-POWER BUTTON-#8801	1	E4683
5	50-040270-00	E12T-WLAN BUTTON	1	E4682
4	50-031230-10	E12T-UPPER COVER-#8019/#8131	1	B1305
3	50-025170-00	E12T-INDICATOR LENS	1	E4684
2	50-000314-00	E12T-INDICATOR LENS PLATE	1	E4772
1	40-030883-01	E12T-K/B BRACKET	1	B1307
P/N		DESCRIPTION	QTY	DRAW N.D.
66-643010-00	E12B #8019/#8131	UPPER COVER ASSY		
50-964301-00	E12B #8019/#8131	UPPER COVER ASSY		

MAT'L		QTY	1	UNITS	MM	SHEET	1 of 1
FINISH		SCALE	FREE				
DRAW	AR/VIN	DATE	02/13/04				
DSGN	AR/VIN	DATE	02/16/04				
CHECK	CC WANG	DATE	02/16/04				
APPR	FT YANG	DATE	02/17/04				

DRAWING NAME: #8019/#8131 UPPER COVER ASSY

E12B

SCALE: FREE

PRODUCT NAME: #8019/#8131 UPPER COVER ASSY

FILE NO. E1098-05

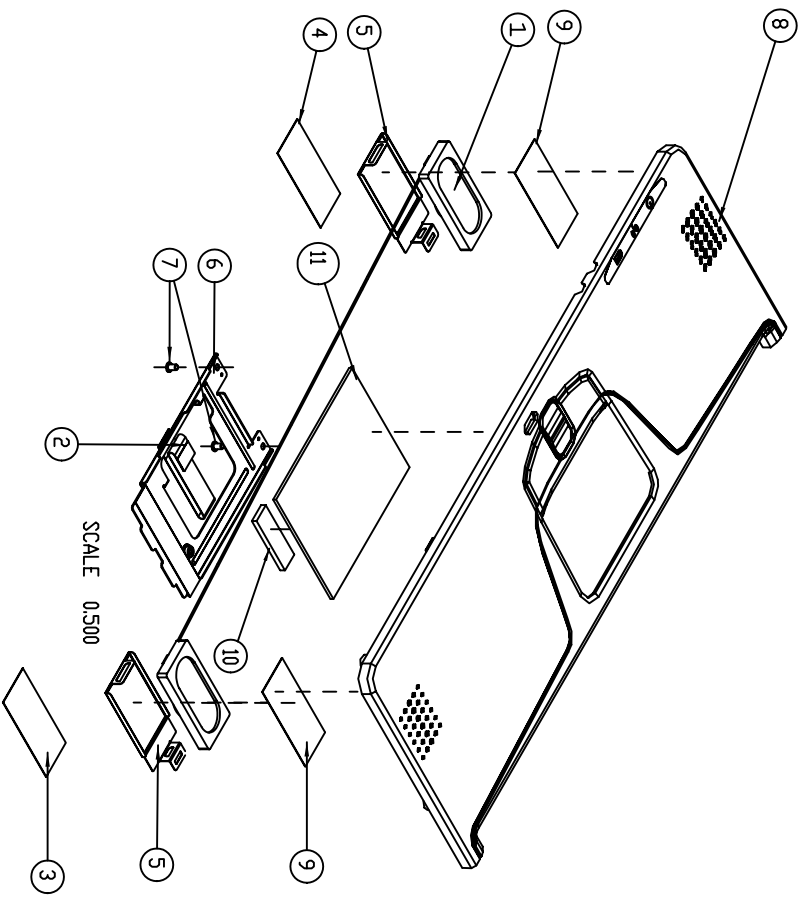
PART NO. 50-964301-XX

REV.	DATE	DESCRIPTION	CHANGE BY	APPROVAL BY	REMARKS
A	02/13/04	G12,H12	AR/VIN	FT YANG	A
0	02/13/04	NEW		FT YANG	TDC040223-00

M					
L					
K					
J					
I					
H					
G					
F					
E					
D					
C					
B					
A					

Twinhead

TOLERANCE UNLESS OTHERWISE SPEC.			
	Metal	Plastic	PCB
0--20	+0.10	+0.10	+0.10
20--99	+0.15	+0.15	+0.15
100--199	+0.20	+0.25	+0.20
200-----	+0.25	+0.30	+0.25



ITEM	PART NO	DESCRIPTION	QTY	FILE NO
11	73-080052-30	TOUCHPAD SYNAPTICS-TM41PDD1350	1	
10	51-350094-02	CONDUCTIVE SPONG 5*3.5*15mm	1	KL1788
9	51-005060-00	E12T-SPEAKER MESH-BLACK	2	E4693
8	50-964301-51	E12B-PALMREST ASS'Y-#8148	1	E1098
7	41-760020-02	SCREW ISDTT-M2*2L D3.4/H0.4mm	2	B2252
6	40-030885-01	E12T-TOUCHPAD BRACKET	1	C3776
5	40-030884-00	E12T BRACKET FOR PALMREST SPEAKER	2	C3775
4	40-008181-00	E12B-AL FOIL FOR PALMREST-IN SPEAKER	1	E4839
3	40-008051-00	P14N-UPPER EMI AL FOIL	1	E4129
2	29-016338-00	P22AJ-FFC(RP=1.0)FOR TOUCHPAD	1	CA338
1	22-300000-00	SPEAKER(RXL)-W/RUBBER	1	C3781
BOM	77-643009-10	E12B-#8148 PALMREST KIT		

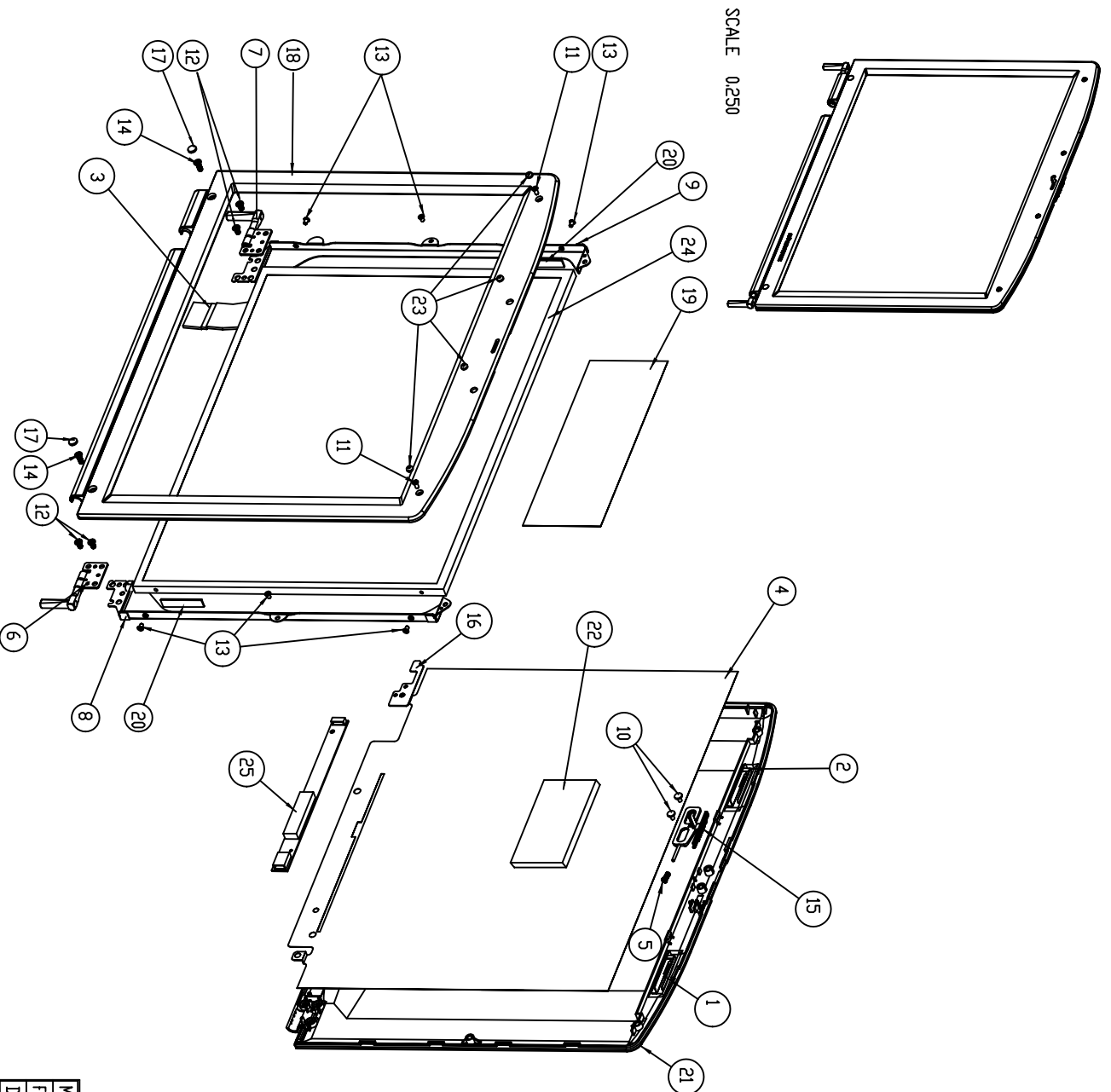
REV.	DATE	DESCRIPTION	CHANGE BY	APPROVAL BY	REMARKS	MDI S/N
0	03/01/04	NEW				

MAT'L	SEE NOTE	QTY.	1	UNITS	MM	SHEET	1 of 1
FINISH		SCALE	1/1				
DRAW	JDMAS	03/01/04		PRODUCT NAME:	E12B		
DSGN				DRAWING NAME:	E12B-#8148 PALMREST KIT		
CHECK							
APPRD.							

Twinhead

FILE NO.	E1098-15
PART NO.	77-643009-10

TOLERANCE UNLESS OTHERWISE SPEC.			
	Metal	Plastic	PCB
0--20	±0.10	±0.10	±0.10
20--99	±0.15	±0.15	±0.15
100--199	±0.20	±0.25	±0.20
200-----	±0.25	±0.30	±0.25



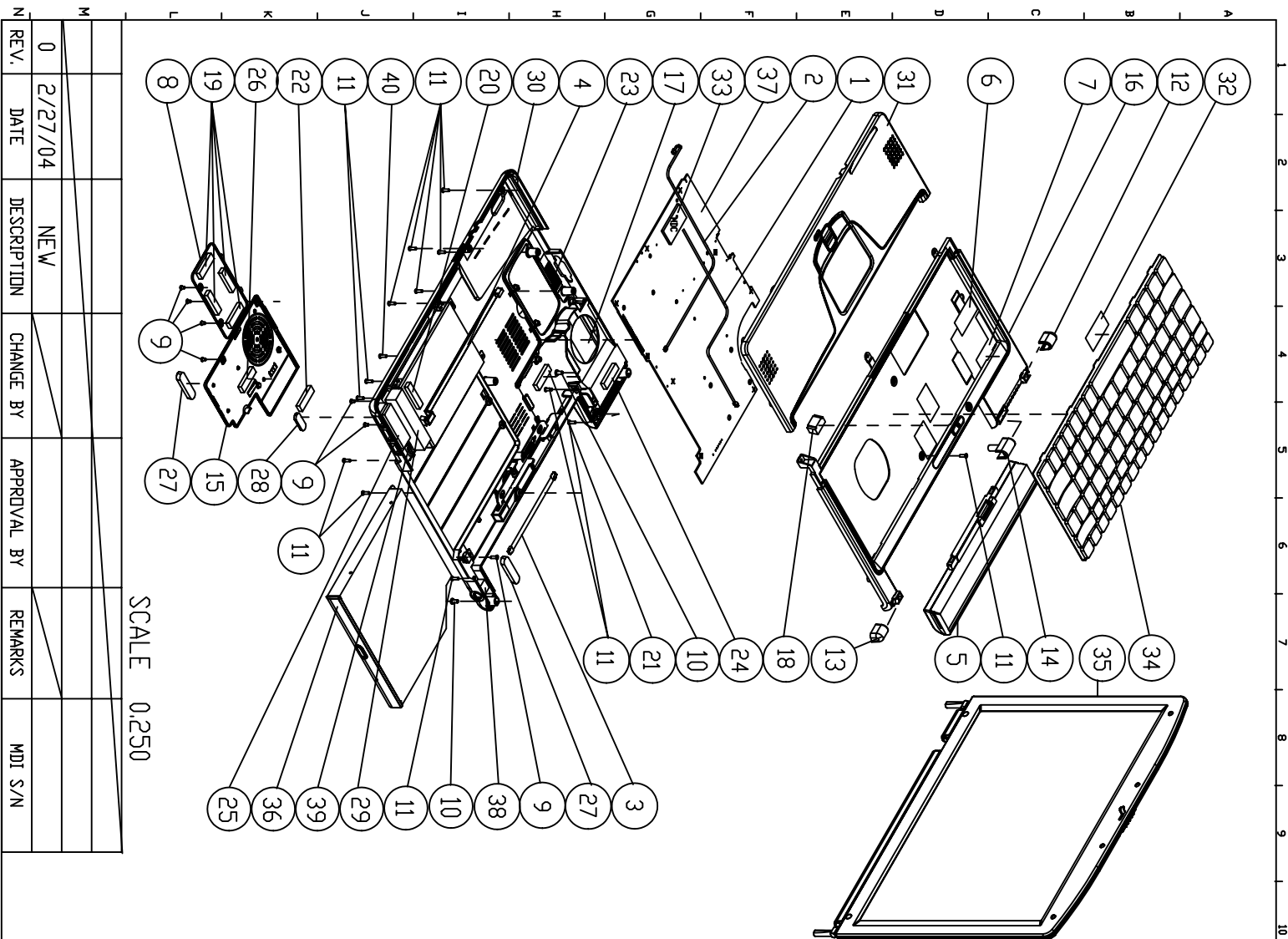
ITEM	P/N	DESCRIPTION	QTY	DRAW NO.
25	76-030105-00	INVERTER-5V-5W-10X123mm-FDR 12.1" LCD	1	
24	72-112230-30	LCD-PIA-XGA TFT HYUNDAI-H12*12	1	
23	52-002083-00	P22A-J-RUBBER(TOP)-PAINTING 428C	4	E4637
22	51-036215-00	E12I-SUPPORT SPINNGE FDR LCD	1	E4837
21	50-033110-10	E12B-LCD COVER FDR TONG FANG-#8148	1	B1326
20	50-023472-00	E12B-MYLAR FDR LCD-15X1.5X0.5mm	2	KS-0011
19	50-023324-00	N222SP-MYLAR FDR LCD HARNESS	1	E4395
18	50-022330-10	E12B-LCD BEZEL FDR TONG FANG-#8148	1	B1325
17	50-020385-F0	P22A-J-RUBBER PAD-PAINTING 428C	2	B4405
16	50-000315-01	E12I-HARNSS PLATE FDR LCD	1	E4773
15	50-000310-01	E12I-LCD HOOK	1	E4678
14	41-721526-05	SCREW ISOT-M2.6X5L H=0.8mm-NYL DK	2	B3516
13	41-721520-03	SCREW ISOT-M2.6X3L-SELF-LOCKING@0.35mm	6	B4424
12	41-720526-04	SCREW ISOT-M2.6X4L H=0.8mm-NYL DK	4	B3516
11	41-720520-04	SCREW M2.0X4 NI+NYL DK (KH)	2	
10	41-420520-03	SCREW BPS/M(05.5)-M2X3-NYL DK	1	B3892
9	40-030882-01	E12I-LCD BRACKET-L	1	C3773
8	40-030881-01	E12I-LCD BRACKET-R	1	C3772
7	40-015091-00	E12I-HINGE L	1	C3784
6	40-015090-00	E12I-HINGE R	1	C3785
5	40-011701-00	N222S8-LCD HOOK SPRING	1	D4961
4	40-008160-00	E12I-AL FIDL FDR LCD	1	B2372
3	29-001650-03	N222S1-HARNSS FDR HYUNDAI 12.1"	1	SH650
2	22-600041-01	PIEA ANTENNA-L	1	C3812
1	22-600040-01	PIEA ANTENNA-R	1	C3774
BDM	86-643905-10	#8148 DISPLAY ASSY-12.1" XGA TFT HYUNDAI		

MAT'L	SEE NOTE	QTY	1	UNITS	MM	SHEET	1 of 1
FINISH		SCALE	1/1				
DRAW	JDMAS	03/01/04	PRODUCT NAME:	E12B			
DSGN			DRAWING NAME:	#8148 DISPLAY ASSY XGA TFT HYUNDAI			
CHECK			FILE NO.	E1098-16			
APPRD.			PART NO.	86-643905-10			

REV.	DATE	DESCRIPTION	CHANGE BY	APPROVAL BY	REMARKS	MDI S/N
0	03/01/04	NEW				

8148

DISPLAY ASSY XGA TFT HYUNDAI



REV.	DATE	DESCRIPTION	CHANGE BY	APPROVAL BY	REMARKS	MDI S/N
0	2/27/04	NEW				

SCALE 0.250

TOLERANCE UNLESS OTHERWISE SPEC.			
	Metal	Plastic	PCB
0--20	+0.10	+0.10	+0.10
20--99	+0.15	+0.15	+0.15
100--199	+0.20	+0.25	+0.20
200-----	+0.25	+0.30	+0.25

40	41-850020-07	SCREW ISDP-MEXTL-SELF-LOCKING-BLACK-NIT	1	B3521
39	E121-USB PCB ASS'Y		1	
38	E121-DC IN PCB ASS'Y		1	
37	E12B-PCBA ASS'Y		1	
36	E12B-CD ROM ASS'Y		1	
35	E12B-#8148 DISPLAY ASS'Y		1	
34	E121-KEYBOARD		1	
33	76-060007-00	MOD MODERN CARD-SMART LINK	1	
32	63-250190-00	KEY PARTS BARCODE LABEL	1	KL1826
31	77-643009-10	E12B-#8148 PALMREST KIT	1	E1098
30	77-643007-00	E121-#8019-M LOWER COVER KIT	1	E1097
29	52-002121-00	E121-RUBBER FDR HDD	1	E4803A
28	52-002022-20	P22A1-LOWER CD ROM RUBBER-PANTONE 428C	2	D4839
27	52-000000-20	P22A1-RUBBER FOOT-PANTONE 428C	2	D4681
26	51-350094-23	E121-CONDUCTIVE SPONGE 3#4#25mm	1	KL1788
25	51-350094-21	CONDUCTIVE SPONGE 7#1#45mm	1	KL1788
24	51-350094-15	CONDUCTIVE SPONGE 10#0.5#35mm	2	KL1788
23	51-350094-06	CONDUCTIVE SPONGE 10#1#30mm	1	KL1788
22	51-350094-05	CONDUCTIVE SPONGE 9#3.5#20mm	1	KL1788
21	51-350094-03	CONDUCTIVE SPONGE 5#5.5#35mm	1	KL1788
20	51-350094-02	CONDUCTIVE SPONGE 5#3.5#15mm	1	KL1788
19	51-350094-01	CONDUCTIVE SPONGE 5#2#12mm	4	KL1788
18	51-036212-00	E121-SPONGE FDR POWER BUTTON	1	E4802
17	51-035041-00	ELECTRICALLY CONDUCTIVE-FABRIC TAPE 35#15	1	E4898
16	50-964301-41	E12B-#8148 UPPER COVER ASS'Y	1	E1098
15	50-964101-01	E121-#8019 CPU DDDR ASS'Y	1	E1097
14	50-035192-10	E121-HARNESSS COVER-#8148	1	E4681A
13	50-035191-10	E121-HINGE COVER-R-#8148	1	E4680A
12	50-035190-10	E121-HINGE COVER-L-#8148	1	E4679A
11	41-850520-06	SCREW ISDP M2#6-L-SELF-L-DCKING	13	B3521
10	41-721526-05	SCREW ISDT M2.6#5L H=0.8mm-NYLTK	2	B3516
9	41-721520-03	SCREW ISDT M2#3-SELF-L-DCKING	7	B4424
8	40-011662-00	E121-RAM DDDR-#8019	1	C3778A
7	40-008180-100	E12B-UPPER EMT AL FOIL	1	E4838A
6	40-008163-00	E121-AL FOIL FDR K/B BRACKET EMT	1	E4811
5	29-015340-00	E12B-#8148 BATTERY MODULE	1	CA340A
4	29-001735-00	P22A1-SB USB FPC	1	SH7350
3	29-001734-00	E121-POWER HARNES	1	SH7340
2	22-600043-10	E121-MDC MODERN HARNES	1	SH7340
1	22-600043-10	E121-ANTENNA-V/HARNES FDR GEMTEK	1	C3824
ITEM	PART NO	DESCRIPTION	QTY	FILE NO

MAT'L	QTY	1	UNITS/MM	SHEET	1 of 1		
FINISH	SCALE	1/1					
DRAW	JDMAS	2/27/04	PRODUCT NAME:	E12B			
DSGN			DRAWING NAME:	E12B-#8148 SYSTEM CABINET			
CHECK				FILE NO.	E1098-14		
APPRD.				PART NO.	86-643000-10		

Twinhead